

Project
 Customer pos.no
 Project ID
 Pos.no
 Created by

Page 1 / 5
 Created 2022-06-30
 Update 2022-06-30

Data sheet

Pump type

Amaline C 2035-1450/24UDG

Operating data

Flow	248,3	m ³ /h	Fluid		
Head	0,7	m	Density	1.010	kg/m ³
Operating speed	1171	1/min	Viscosity	3,12	mm ² /s
Shaft power	1,2	kW	Temperature	20	°C
Efficiency	41,2	%	Hydraulic acceptance acc.	ISO 9906 § 4.4.2	
Shut off head	1,6	m			
Inlet chamber	Open inlet c				
Minimum water level		m			
Application range	Head		Flow	Minimum water level	
	From	1,8 m	112,5 m ³ /h	---	m
	To	0,4 m	505,7 m ³ /h		m

Design

Design	Submersible pump			
Make	KSB		Impeller type	Axial impeller
Series	Amaline			Open
Frame size	200		Degree of propeller	13 °
Stages	1		Free passage	mm
Curve number	K43242n/1		Discharge column nominal size	200 mm
Type of bearings	Antifriction		Height of pump	mm
Nos. of bearings	1 / 1		Weight	47 kg
Lubrication	Grease lubrication, lubricated for lifetime			

Materials

Motor casing	Grey cast iron EN-GJL-250 (A 48 Class 35B)
Motor casing cover	Grey cast iron EN-GJL-250 (A 48 Class 35B)
Casing cover	Grey cast iron EN-GJL-250 (A 48 Class 35B)
Gear casing	
Taper piece	Polyurethane
Pump casing	Stainless steel EN-1.4571 (A 276 Type 316 Ti)
Motor shaft	Stainless steel EN-1.4571 (A 276 Type 316 Ti)
Gear unit output shaft	
Propeller	Stainless steel EN-1.4571 (A 276 Type 316 Ti)
Bolts, nuts	Stainless steel A4 (EN-1.4571) (A 276 Type 316)
O-Rings	Viton (FPM)

Project
Customer pos.no
Project ID
Pos.no
Created by

Page 2 / 5
Created 2022-06-30
Update 2022-06-30

Data sheet

Pump type

Amaline C 2035-1450/24UDG

Shaft seal

Cable Entry
Arrangement:
Seal on medium side
Mechanical seal, pump-side
Mechanical seal, bearing-side

Double mechanical seal
Tandem
with elastomer bellows
Silicon carbide / Silicon carbide
Silicon carbide / Silicon carbide

Monitoring

Thermal winding protection
Explosion proof protection
Motor housing monitoring
Mechanical seal leakage detection
Bearing temperature monitoring

By PTC thermistors
By PTC (Explosion proof models only)
By conductive moisture sensor electrode

Coating

Preparatory treatment
Blasting method
Primer
Dry film thickness primer
Top coat
Solids content
Dry film thickness top coat
Colour

Sa 2 1/2 to ISO 8501-1 / ISO 12 944-4 DIN 55928, Part 4
Steel grit blasting
Zinc phosphate or Zinc dust
> 35 microns
2-component epoxy resin
> 82 %
> 150 microns
Ultramarine Blue (RAL 5002 to DIN 6174)

Project
Customer pos.no
Project ID
Pos.no
Created by

Page 2.1 / 5
Created 2022-06-30
Update 2022-06-30

Pump type

Amaline C 2035-1450/24UDG

Installation

INSTALLATION

Type of installation: Horizontal wet-well installation
Connection pipe: DC_DN 200
Submergence, min.: 500 mm
Minimum water level t1 in appl. Range:
Connection to connection pipe:
Guide rail: square pipe 60x60
Guide rail length: 6 m (20 ft)
Lifting device: Shackle with lifting rope

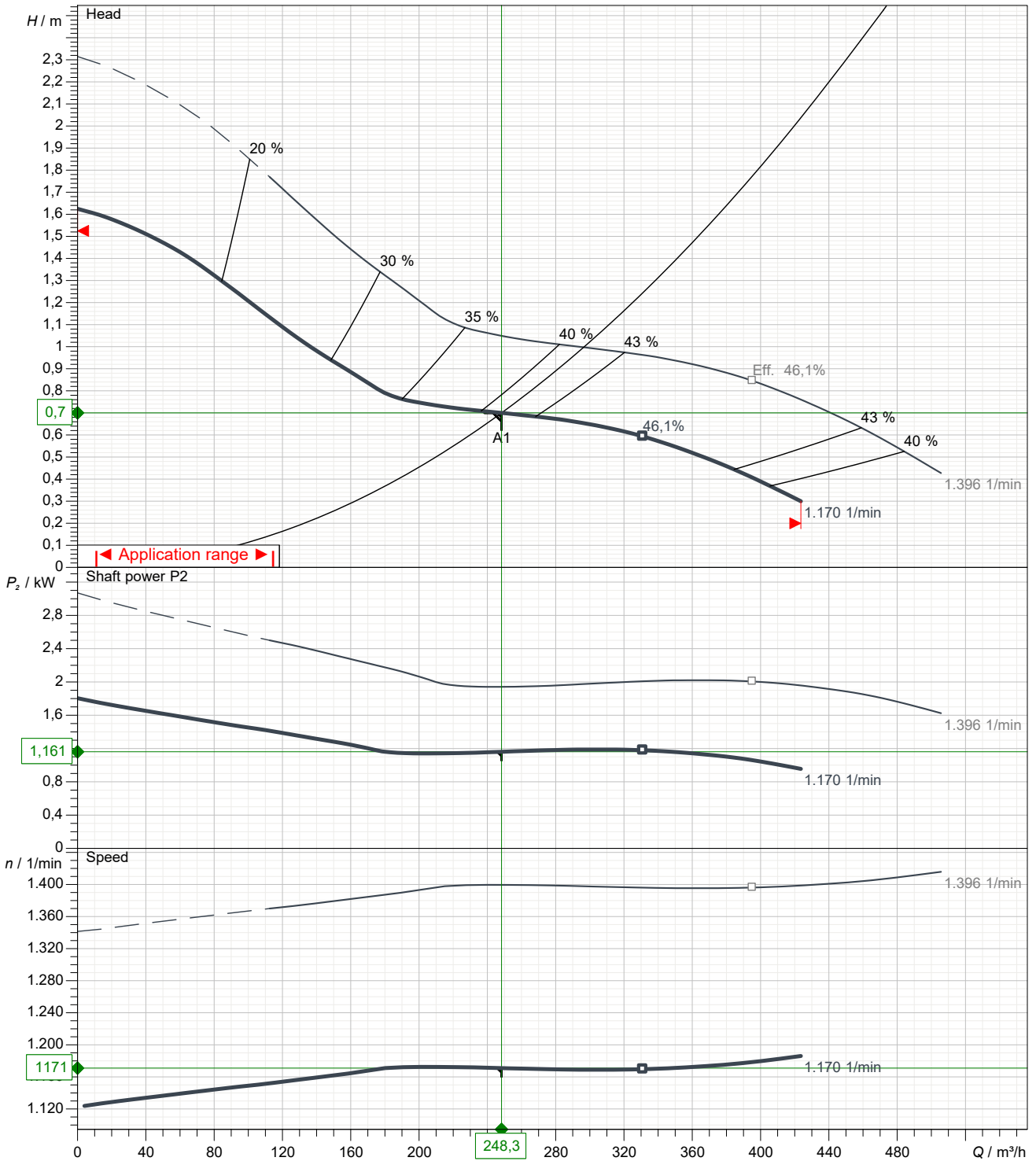
Bolt-free, by claw on pu

Materials:

Connection pipe: Stainless steel EN-1.4571 (A 276 Type 316 Ti)
Guide rail: Stainless steel EN-1.4301 (A 276 Type 304)
Lifting rope: Stainless steel EN-1.4401 (A 276 Type 316)
Shackle: Stainless steel EN-1.4401 (A 276 Type 316)

Performance curve

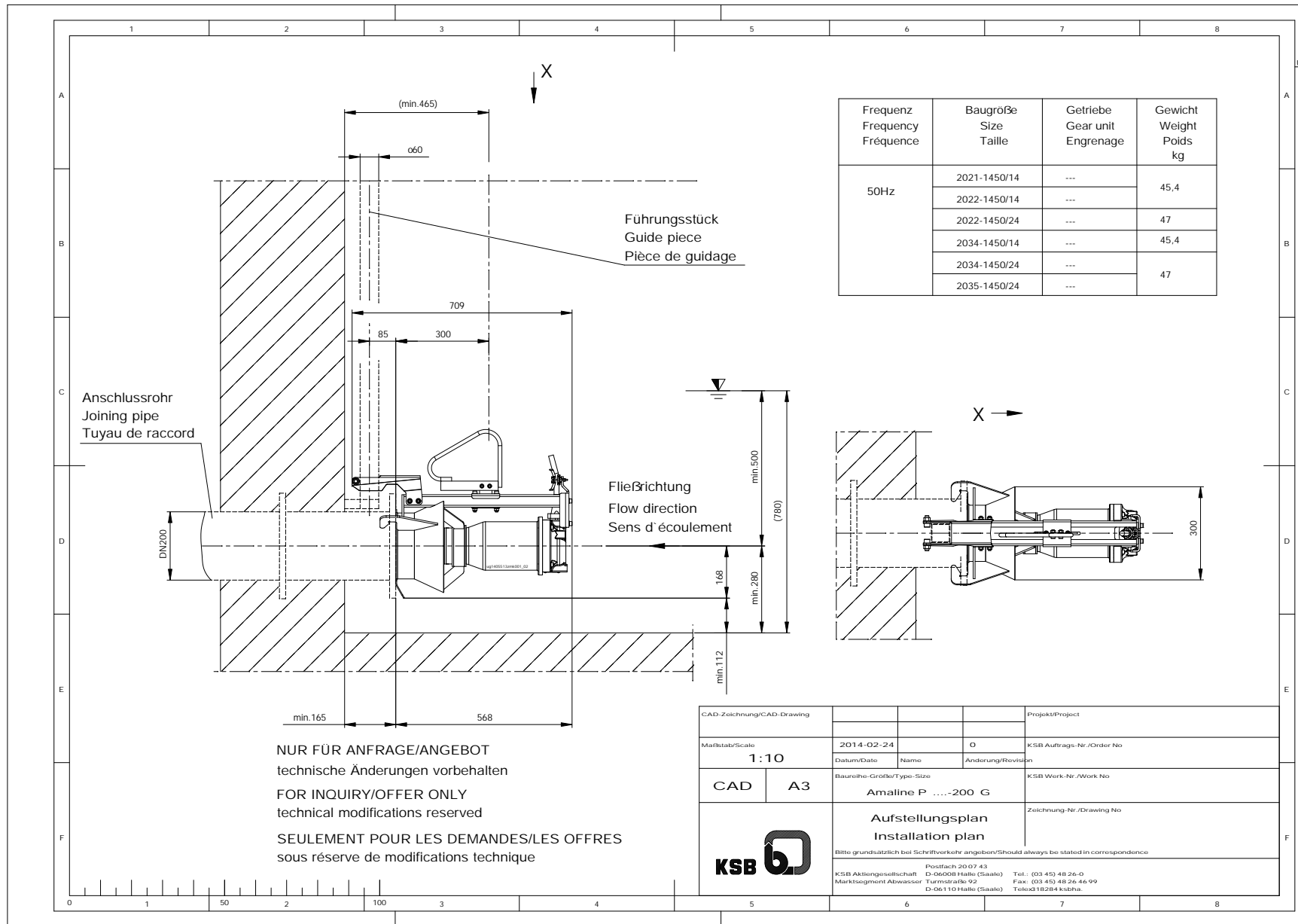
Pump type Amaline C 2035-1450/24UDG



Impeller type	Axial impeller	, Open	Curve number	K4324n/1
Free passage	65 mm	Density	Frequency	50 Hz
Impeller size	200 mm	Viscosity	Speed	1.171 1/min

ISO 9906 § 4.4.2

2021/06/02 (Build 213), 32 bit R16.07.01 - 05-08-2021 ALL World



Project
 Customer pos.no
 Project ID
 Pos.no
 Created by



Page 6 / 6
 Created 2022-06-30
 Update 2022-06-30

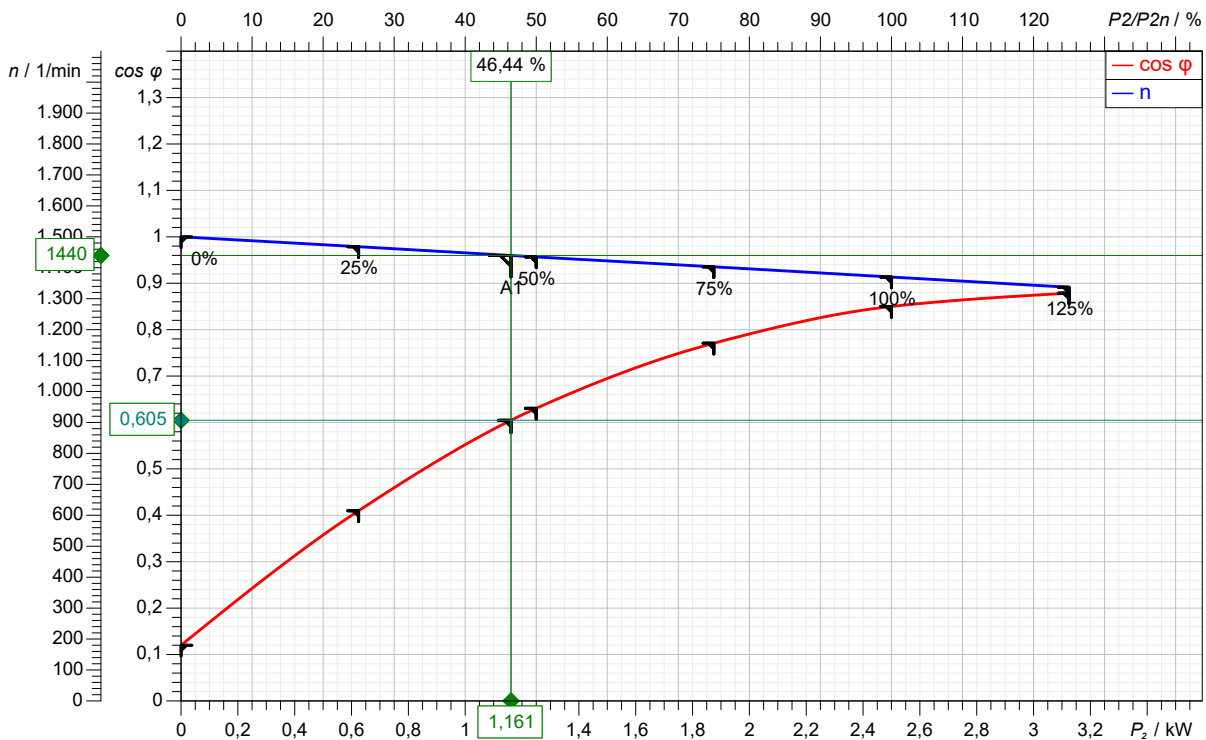
Data sheet: motor data

Motor type **24UDG**

Motor manufacturer	KSB SE & Co. KGaA	Rated voltage	400	V
Design acc. standard	-	Rated frequency	50	Hz
Degree of protection	IP68	Rated power P2	2,5	kW
Insulation class	F	Rated current	5,76	A
Coolant temperature	< / = 40 °C (104 °F)	Nominal speed	1.370	1/min
Starting mode	Direct starting	Starting to rated current	3,5	
No. starts / h	15	Starting current	20,2	A
		Max. voltage	420	V
		Min. voltage	380	V
Motor casing	Grey cast iron EN-GJL-250 (A 48 Class 35B)			
Explosion protection	--			
Pump type	Amaline C 2035-1450/24UDG			

Load	P1 kW	P2 kW	eta %	cos phi	I A
4/4	3,39	2,5	73,7	0,85	5,8
3/4	2,44	1,9	77,0	0,77	4,6
2/4	1,64	1,3	76,1	0,63	3,8
1/4	0,93	0,6	67,3	0,41	3,3

Main cable 1 x S1BN8-F 7G1.5 Diameter 13,20 mm...14,40 mm
 Control cable --- Diameter
 Cable, outer sheath Waterproof synthetic rubber compound
 Cable length 10 m (33 ft)



2021/06/02 (Build 213), 32 bit R16.07.01 - 05-08-2021 ALL World