

MovitecV 002/02-B4G54F0071D5KW

High pressure Inline Pump

Operating data

Pumped medium	Water	Actual flow rate	2.05 m ³ /h
	Clean water	Actual developed head	12.71 m
Pumped medium details	Not containing chemical and mechanical substances which affect the materials	Efficiency	53.7 %
		MEI (Minimum Efficiency Index)	≥ 0.70
Max. ambient air temperature	20.0 °C	Power absorbed	0.13 kW
Min. ambient air temperature	20.0 °C	Pump speed of rotation	2940 rpm
Fluid temperature	20.0 °C	NPSH required	2.25 m
Fluid density	998 kg/m ³	Permissible operating pressure	16.00 bar.g
Fluid viscosity	1.00 mm ² /s		
Suction pressure max.	0.00 bar.g	Discharge press.	1.24 bar.g
Mass flow rate	0.57 kg/s	Shutoff head	16.23 m
Max. power on curve	0.15 kW	Min. allow. flow for continuous stable operation	0.30 m ³ /h
Max. allow. mass flow Design	0.93 kg/s	Min. allow. mass flow for continuous stable operation	0.08 kg/s
	Single system 1 x 100 %		
			Tolerances to ISO 9906 Class 3B; below 10 kW acc. to paragraph 4.4.2

Design

Pump standard	KSB high pressure in-line international execution	Shaft seal manufacturer	DP
Close-coupled pump without motor		Shaft seal type	MG-FX
Design	Close-coupled	Material code	BQ7EGG-DW001
Orientation	Vertical	Shaft seal code	54
Suction nominal dia.	G 1	Sealing plan	I Single-acting mechanical seal(internal circulation)
Suction nominal pressure	PN 16	A liquid free of solids is assumed	
Suction position	90° (right)	Seal chamber design	Standard seal chamber
Connection standard discharge	EN ISO 228-1	Contact guard	With
Discharge nominal dia.	G 1	Impeller diameter	80.0 mm
Discharge nominal pressure	PN 16	Direction of rotation from drive	Clockwise
Discharge position	270° (left 90°)	Color	Graphite black (RAL 9011)
Oval flange			
Shaft seal	Single acting mechanical seal		

Driver, accessories

Driver type	Electric motor	Rated power P2	0.37 kW
Drive standard mech.	IEC	Performance limit P2max	0.43 kW
Drive supplied by	without motor	Available reserve	222.47 %
Motor const. type	V18	Number of poles	2
Motor size	071M	Fixed bearing reinforced	axial
Frequency	50 Hz		

MovitecV 002/02-B4G54F0071D5KW

High pressure Inline Pump

Materials V

Pump shroud (10-6)	Stainless steel 1.4301	O-Ring (412)	EPDM WRc / ACS Approved
Pump casing (101)	Stainless Steel 1.4308	Seal cover (471)	Stainless Steel 1.4308
Stage casing (108)	Stainless steel 1.4301	Bearing sleeve (529)	Tungsten Carbide
Cover (160)	Stainless steel 1.4301	Flange (723)	Stainless Steel 1.4308
Diffuser (171)	Stainless steel 1.4301	Baseplate (890)	Ductile cast iron EN-GJS-400-15
Shaft (210)	Chrome steel 1.4057+QT800	Screwed plug (903)	Stainless steel 1.4301
Impeller (230)	Stainless steel 1.4301	Tie bolt (905)	Chrome steel 1.4057+QT800
Motor stool (341)	Grey cast iron EN-GJL-250	Nut (920)	Stainless steel 1.4301

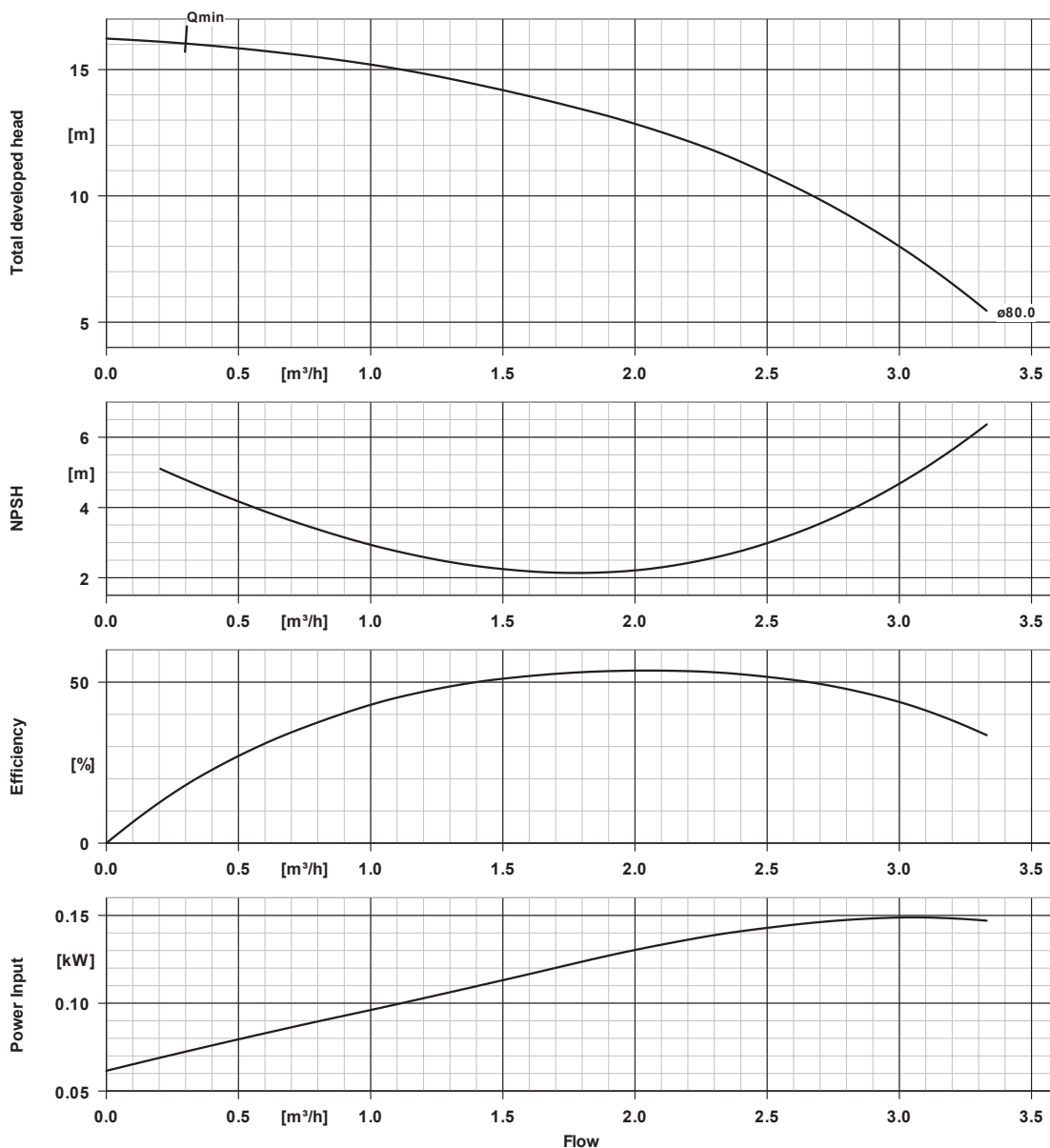
Packaging

Packaging category	A0 Packing acc. to KSB choice	Packaging for transport	Truck
Packaging for storage	Indoor		

Nameplates

Nameplates language	International
---------------------	---------------

MovitecV 002/02-B4G54F0071D5KW
High pressure Inline Pump

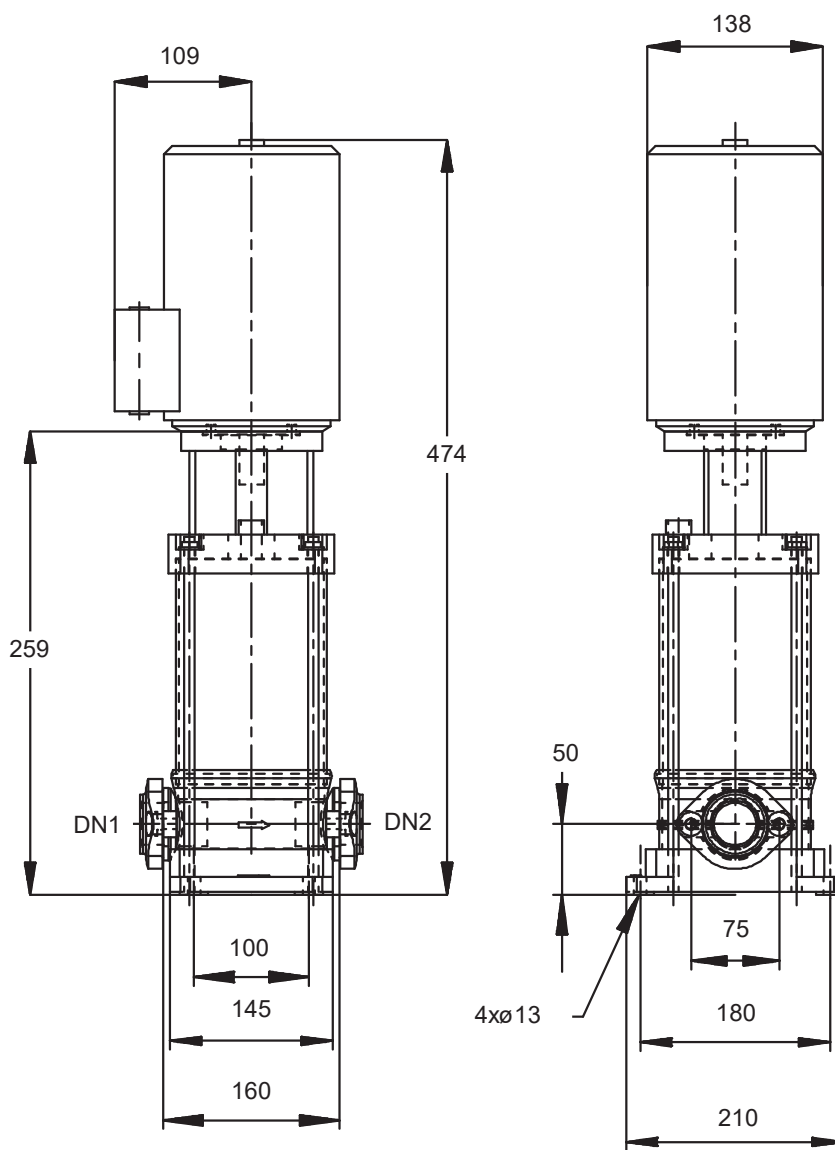


Curve data

Speed of rotation	2940 rpm	MEI (Minimum Efficiency Index)	≥ 0.70
Fluid density	998 kg/m^3	Power absorbed	0.13 kW
Viscosity	1.00 mm^2/s	NPSHR	2.25 m
Flow rate	2.05 m^3/h	Curve number	K95000200/2
Total developed head	12.71 m	Effective impeller diameter	80.0 mm
Efficiency	53.7 %	Acceptance standard	Tolerances to ISO 9906 Class 3B; below 10 kW acc. to paragraph 4.4.2

MovitecV 002/02-B4G54F0071D5KW

High pressure Inline Pump



Drawing is not to scale

Dimensions in mm

MovitecV 002/02-B4G54F0071D5KW

High pressure Inline Pump

Motor

required but not scope of supply

Motor size	071M
Motor power	0.37 kW
Number of poles	2
Speed of rotation	2940 rpm
Thrust bearing housing	No

Connections

Suction nominal size DN1	G 1 / EN ISO 228-1
Discharge nominal size DN2	G 1 / EN ISO 228-1
Nominal pressure suct.	PN 16
Rated pressure disch.	PN 16
Oval flange	

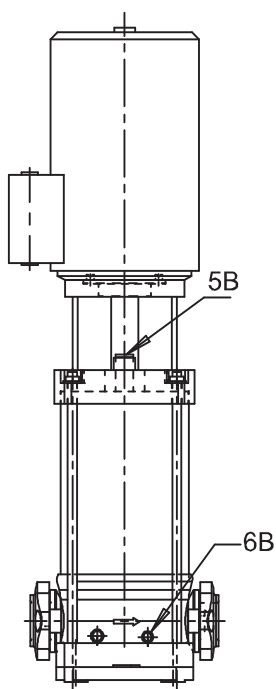
Weight net

Pump	11 kg
Total	11 kg

Connect pipes without stress or strain!

For auxiliary connections see separate drawing.

MovitecV 002/02-B4G54F0071D5KW
High pressure Inline Pump



Connections

5B venting
6B Pumped liquid drain

G 3/8
G 1/4

Closed with venting plug
Drilled and plugged.