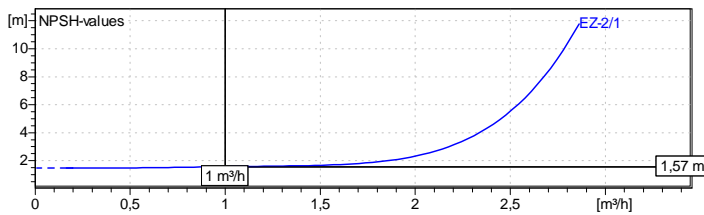
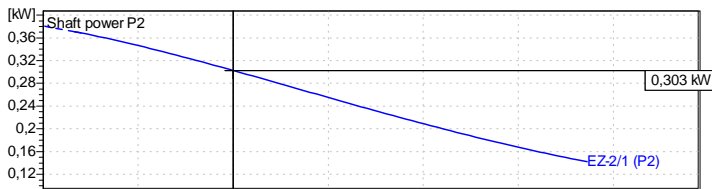
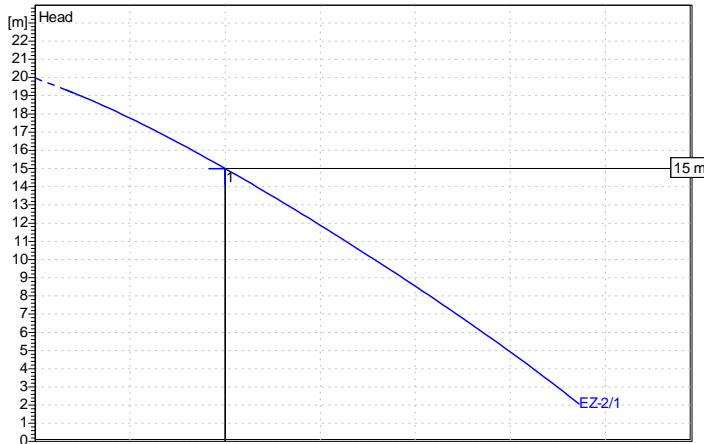


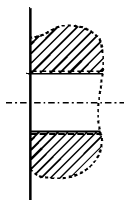


Technical Data



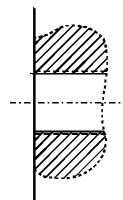
DNs Suction side
Rosca
1 in

GAS



DNd Discharge side
Rosca
1 in

GAS



Nozzles

Requested data

Fluid Clear water
Temp: 20 °C Dens: 0,99819 kg/dm³ Visc: 1,0004 cSt 100 %
Flow 1 m³/h
Head 15 m

Pump data

Type **EZ L - 2 / 1**
Design Group with Motor
Impeller type Side channel
Stage number 1

INCLUDING A TEX CERTIFICATE FOR PUMP

ISO 9906 class 3B, below 10 kW acc. to § 4.4.2

Flow 1 m³/h
Head 15 m
Speed 1400 rpm
Efficiency 13 %
Shaft power 0,303 kW

Materials

Pump housing
Pump stage
Impeller
Pump shaft
Support

Execution: 1901

Cast Iron (EN-GJL-250)
Cast Iron (EN-GJL-250)
Bronze (B505 C91000)
Stainless Steel (A276 TYPE 316L)
Cast Iron (EN-GJL-250)

Shaft seal

Type
Materials / Shaft seal

Mechanical seal

ZN 1181
BQ1EGG

Motor data

Three-phase EExdIBT4

Rated power P2 1,1 kW
Speed 1400 rpm
Rated voltage 400V Y
Rated current 2,5 A
Protection IP 55
Insulation class F
Temperature class T4

ITUR

Size 90 S

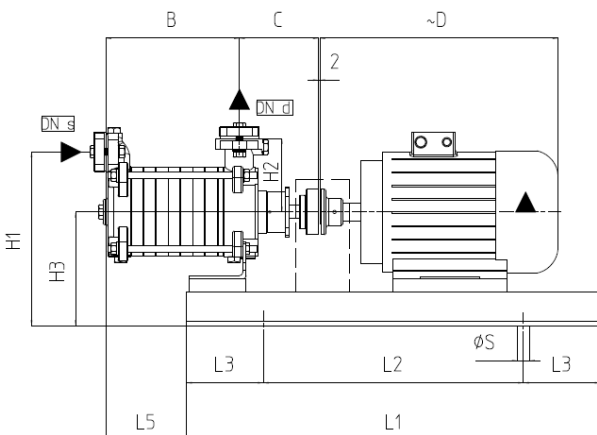
50 Hz

INCLUDING A TEX CERTIFICATE FOR MOTOR

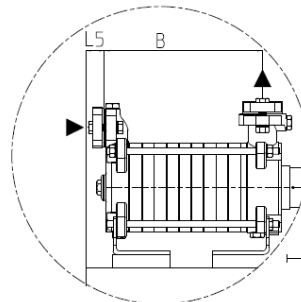
Base plate 75-210/2

Dimensions in mm

B	89
C	118,5
D	280
DNd	1 in
DNs	1 in
E	-
G	150
H1	255
H2	110
H3	165
H4	275
K	260
L	300
L1	600
L2	400
L3	100
L5	10
S	18
T	6
x	4



Detalle / Detail Construc. A



Detalle / Detail Construc. B

Weight 50 kg