

Amamix C 6331/812 UMC**Design**

| | | | |
|--|--|--------------------------------|---------------------------------------|
| Max. temperature | 40.0 °C | Manufacturer | KSB |
| weight | 198 kg | Type (propeller side) | MG |
| Type | Amamix C 6331 / 8 12 | Material code (propeller side) | SIC/SIC/FPM |
| Execution of drive | direct | Mixer standard | KSB-Aggregate international execution |
| Number of blades | 3 | | |
| Propeller diameter | 630.0 mm | | |
| Propeller speed | 475 rpm | Ex protection | No |
| Absorbed power P1 at operating point based on pure water | 10.16 kW | Norm | Without |
| Shaft seal | 2 mech. seals in tandem arrangement with oil reservoir | Temperature classes aggregate | without |
| Sealing plan | T Tandem mechanical seal | additional leakage control | Without |
| | | Weight | 198 |

Motor

| | | | |
|------------------------|---|---|----------------------------|
| FI operation permitted | Yes (acc. motor manufacturer) | Winding | 400 / 690 V |
| Driver type | Electric motor | Poles | 12 |
| Motor manufacturer | KSB | Starting mode | Direct/Star-delta possible |
| Motor generation | M | Starting mode | |
| Motor supplied by | Standard motor supplied by KSB - mounted by KSB | Connection mode | Delta |
| Rated voltage | 400 V | Cooling method | Surface cooling |
| Frequency | 50 Hz | Motor version | U |
| Motor speed | 475 rpm | Operation with Frequency Inverter. | No |
| Rated power | 10.00 kW | Cable design | Rubber hose |
| Rated current | 38.0 A | Cable entry | Sealed along entire length |
| Starting current ratio | 2.5 | Sales description power cable | S1BN8-F 7G4+5x1.5 |
| Insulation class | F to IEC 34-1 | Number of power cables | 1 |
| Type of protection | Without | Motor moisture sensor | 1 |
| Motor enclosure | IP68 | Cable length | 10.00 m |
| Temperature classes | without | Number of additional cable support including catch hook | 0 |
| Temperature sensor | PTC resistor | | |

Material variant

| | | | |
|-----------------------|------------------------|---------------|------------------------|
| Axial propeller (ECB) | Stainless steel 1.4571 | Motor housing | 1.4581 |
| Gear casing | | Shaft | Stainless steel 1.4571 |
| Jet pipe | Without | Studs | A4 |
| Gasket | FKM 80 | | |

Nameplates

| | | | |
|---------------------|---------------|---------------------|------|
| Nameplates language | International | Duplicate nameplate | With |
|---------------------|---------------|---------------------|------|

Amamix C 6331/812 UMC

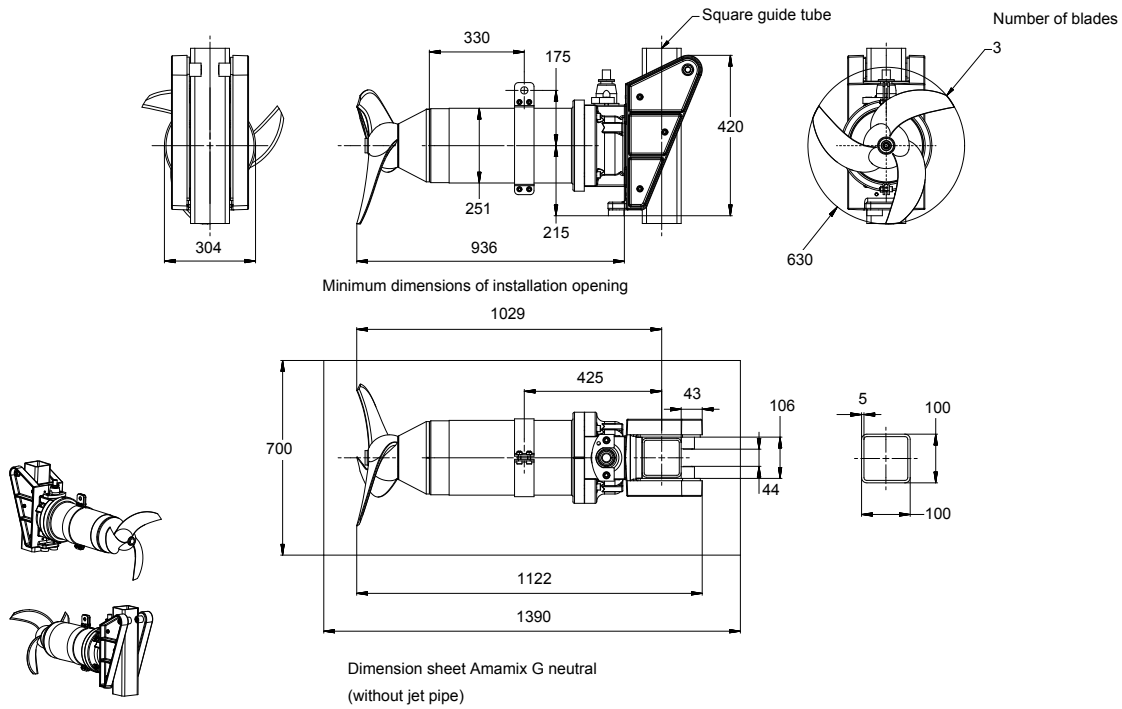
Installation parts

| | | | |
|--|--|--|--|
| Scope of supply | Mixer with installation parts | Bracket | Yes |
| Type of Installation | Universal Instalation (Accessories 22) | Additional fastening set lower holder | Adjustable (universal) level tank floor |
| considered mounting depth (guide tube length) | 7.10 m | Number of center supports | 0 |
| Note for operation | The guide rails must be welded together and cut to length on site. | Adapter for tilt adjustment | Without |
| Holder for square guide rail | Yes | | |
| Claw material | Stainless steel 1.4571 | | |

Please note

KSB does not guarantee specific process results such as flow velocities, degrees of mixing, or deposit-free mixing. Furthermore, we shall not assume any liability if KSB mixers are used in patented processes and/or in case of protected rights of third parties. In the event of a warranty claim, the parts supplied must be dismantled and returned to KSB.

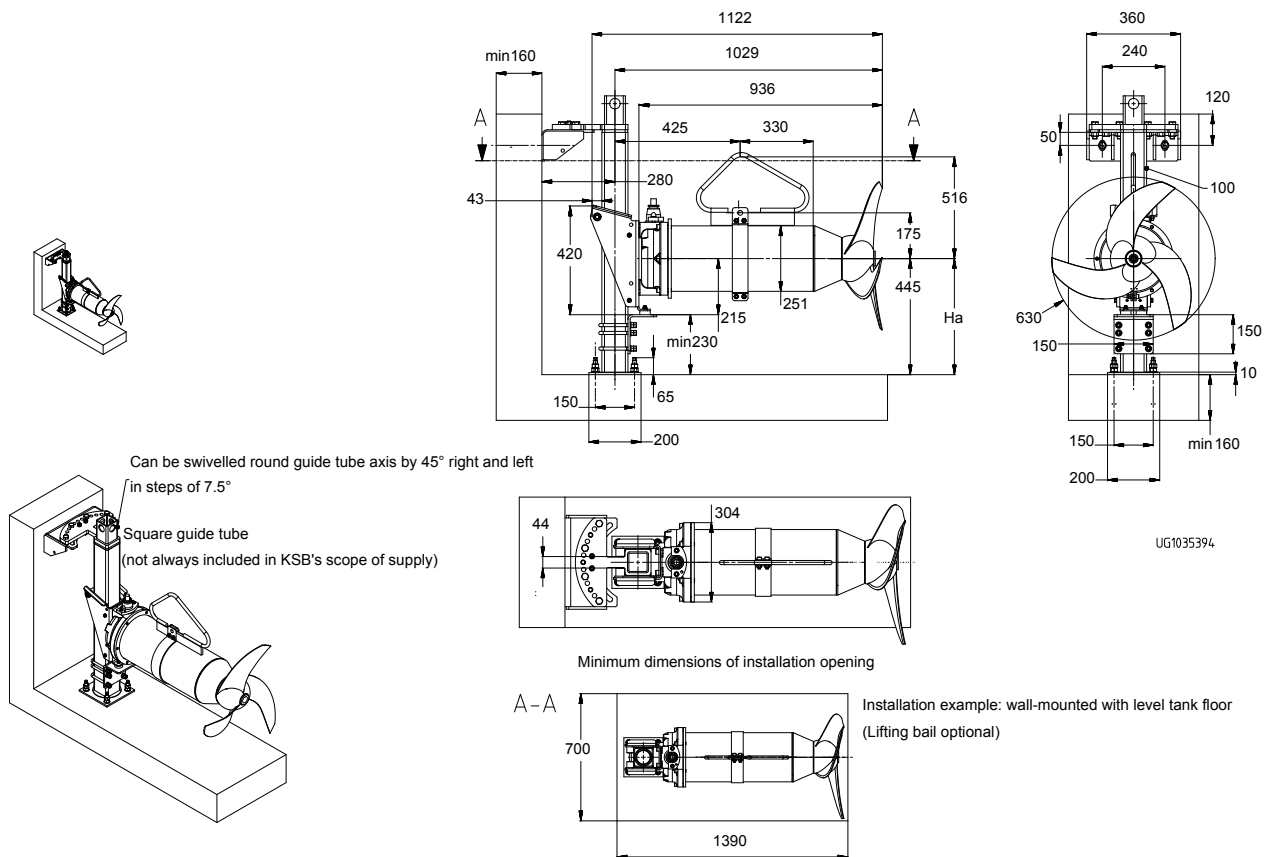
Amamix C 6331/812 UMC



Drawing is not to scale

Dimensions in mm

Amamix C 6331/812 UMC



Drawing is not to scale

Dimensions in mm

Universal Instalation (Accessories 22)