

**ETPL080-080-190 GG I10A301102 B**

Standardised KSB pump

**Operating data**

Requested flow rate		Actual flow rate	82.92 m³/h
Requested developed head		Actual developed head	26.86 m
Pumped medium	Water	Efficiency	63.6 %
	Clean water	Power absorbed	9.52 kW
	Not containing chemical and mechanical substances which affect the materials	Pump speed of rotation	2959 rpm
Ambient air temperature	20.0 °C	NPSH required	6.29 m
Fluid temperature	20.0 °C	Permissible operating pressure	10.00 bar.g
Fluid density	0.998 kg/dm³	Discharge press.	2.63 bar.g
Fluid viscosity	1.00 mm²/s	Min. allow. mass flow for continuous stable operation	3.72 kg/s
Suction pressure max.	0.00 bar.g	Shutoff head	34.39 m
Mass flow rate	22.99 kg/s	Max. allow. mass flow	36.76 kg/s
Max. power on curve	9.84 kW	Design	Single system 1 x 100 %
Min. allow. flow for continuous stable operation	13.44 m³/h		

**Design**

Pump standard	Self priming pump	Material code	Q1Q1X4GG
Design	Baseplate mounted, long-coupled	Shaft seal code	10
Orientation	Horizontal	Sealing plan	I Single-acting mechanical seal(internal circulation)
Suction nominal dia.	DN 80	Seal chamber design	Standard seal chamber
Suction nominal pressure	PN 16	Contact guard	With
Suction position	axial	Impeller diameter	176.0 mm
Suction flange drilled according to standard	EN1092-2	Direction of rotation from drive	Clockwise
Discharge nominal dia.	DN 80	Silicon free pump assembly	Yes
Discharge nominal pressure	PN 16	Bearing bracket construction	Standard (normal)
Discharge position	top (0°/360°)	Bearing bracket size	WE35
Discharge flange drilled according to standard	EN1092-2	Bearing seal	V ring
Shaft seal	Single acting mechanical seal	Bearing type	Anti-friction bearings
Manufacturer	KSB	Lubrication type	Grease
Type	1	Color	Ultramarine blue (RAL 5002) KSB-blue

**Driver, accessories**

Driver type	Electric motor	Frequency	50 Hz
Drive standard mech.	IEC	Rated power P2	11.00 kW
Drive supplied by	without motor	Available reserve	15.53 %
Motor const. type	B3	Number of poles	2
Motor size	160M		

**ETPL080-080-190 GG I10A301102 B**  
Standardised KSB pump

**Materials G**

**Notes 1**

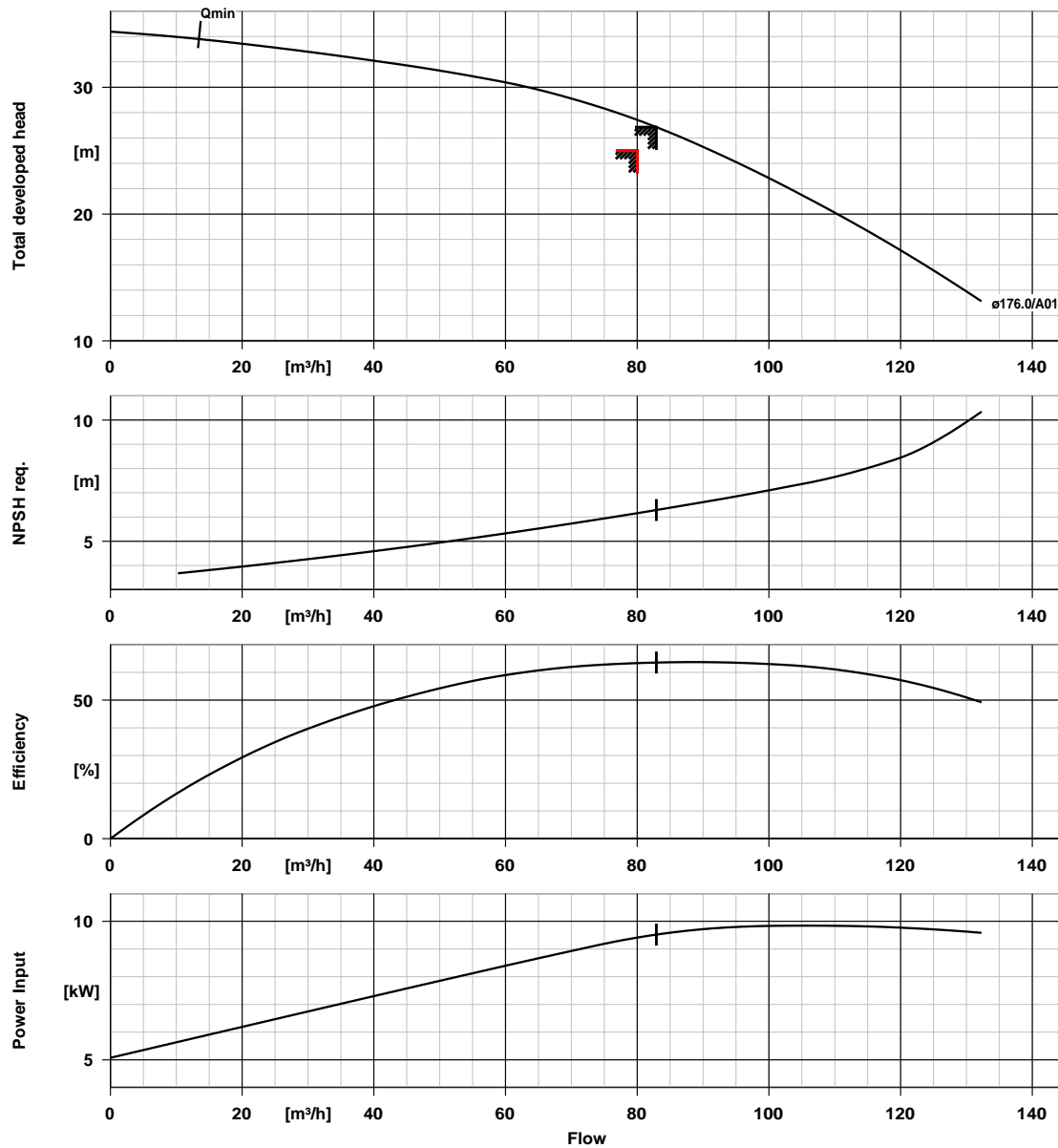
General criteria for a water analysis: pH-value  $\geq 7$ ; chloride content (Cl)  $\leq 250$  mg/kg. Chlorine (Cl<sub>2</sub>)  $\leq 0.6$  mg/kg.

Volute casing (102)	Grey cast iron EN-GJL-250/A48CL35B
Casing cover (161)	Grey cast iron EN-GJL-250/A48CL35B
Shaft (210)	Tempered steel C45+N

Impeller (230)
Bearing bracket (330)
O-Ring (412)
Shaft sleeve (523)

Grey cast iron EN-GJL-250
Grey cast iron EN-GJL-250/A48CL35B
EPDM 80
Stainless steel 1.4571

**ETPL080-080-190 GG I10A301102 B**  
Standardised KSB pump

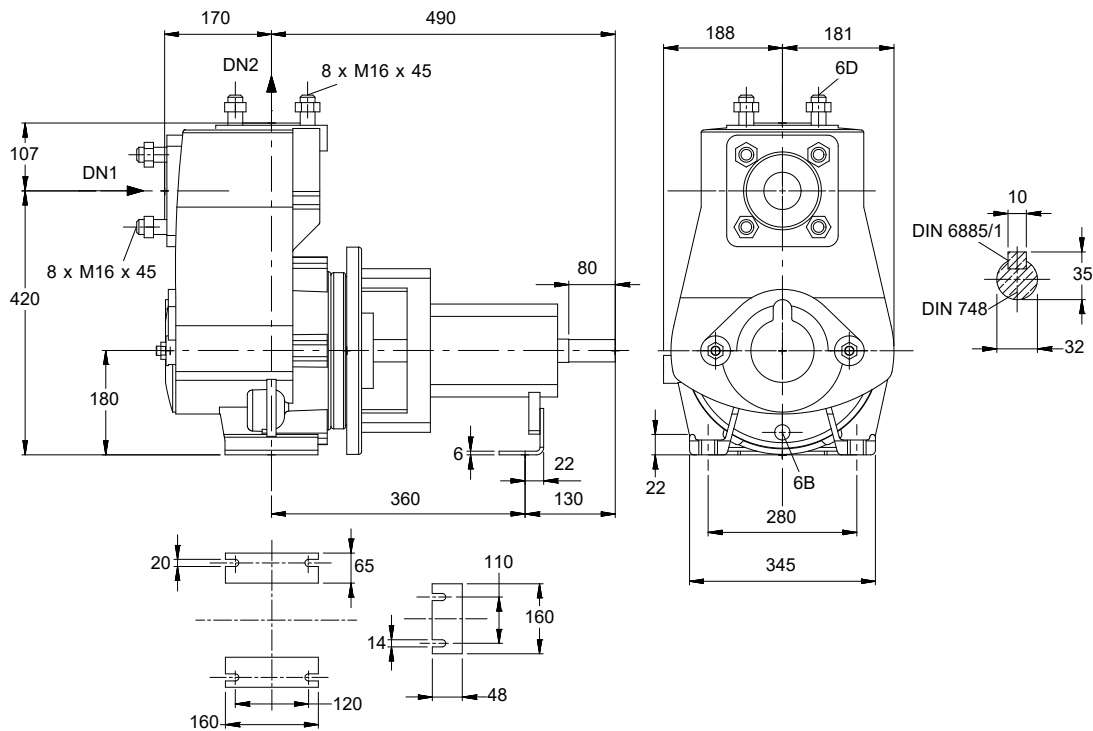


**Curve data**

Speed of rotation	2959 rpm	Requested developed head	25.00 m
Fluid density	0.998 kg/dm³	Efficiency	63.6 %
Viscosity	1.00 mm²/s	Power absorbed	9.52 kW
Flow rate	82.92 m³/h	NPSH required	6.29 m
Requested flow rate	80.00 m³/h	Curve number	K2745.V124750
Total developed head	26.86 m	Effective impeller diameter	176.0 mm

## ETPL080-080-190 GG I10A301102 B

Standardised KSB pump



Drawing is not to scale

Dimensions in mm

### Motor

Not in scope of supply	
Motor size	160M
Motor power	11.00 kW
Number of poles	2
Speed of rotation	2958 rpm

### Connections

Suction nominal size DN1	DN 80 / EN1092-2
Discharge nominal size DN2	DN 80 / EN1092-2
Nominal pressure suct.	PN 16
Rated pressure disch.	PN 16

### Weight net

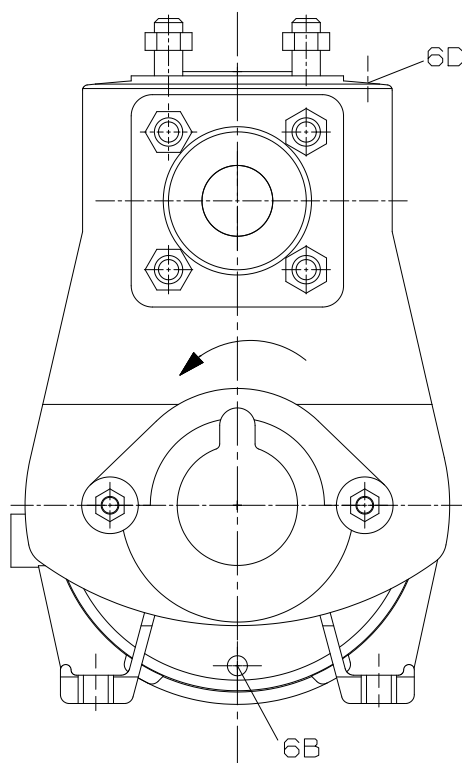
Pump	105 kg
Total	105 kg

Connect pipes without stress or strain!

For auxiliary connections see separate drawing.

## ETPL080-080-190 GG I10A301102 B

Standardised KSB pump



### Connections

6B Pumped liquid drain

6D Pumped medium - filling / venting

G 1/2

G 1/2

Drilled and plugged.

Drilled and plugged.