

**ETPL080-080-200 GG I10A301102 B**  
Standardised KSB pump

**Operating data**

Pumped medium	Water	Actual flow rate	51.75 m <sup>3</sup> /h
	Clean water	Actual developed head	36.50 m
Pumped medium details	Not containing chemical and mechanical substances which affect the materials	Efficiency	63.0 %
		Power absorbed	8.14 kW
Max. ambient air temperature	20.0 °C	Pump speed of rotation	2965 rpm
Min. ambient air temperature	20.0 °C	NPSH required	4.04 m
Fluid temperature	20.0 °C	Permissible operating pressure	10.00 bar.g
Fluid density	998 kg/m <sup>3</sup>	Discharge press.	3.57 bar.g
Fluid viscosity	1.00 mm <sup>2</sup> /s		
Suction pressure max.	0.00 bar.g	Shutoff head	52.38 m
Mass flow rate	14.35 kg/s	Min. allow. flow for continuous stable operation	10.25 m <sup>3</sup> /h
Max. power on curve	8.73 kW	Min. allow. mass flow for continuous stable operation	2.84 kg/s
Max. allow. mass flow	22.60 kg/s	Design	Single system 1 x 100 %

**Design**

Pump standard	Self priming pump	Material code	Q1Q1X4GG
Design	Baseplate mounted, long-coupled	Shaft seal code	10
		Sealing plan	I Single-acting mechanical seal(internal circulation)
Orientation	Horizontal	Seal chamber design	Standard seal chamber
Suction nominal dia.	DN 80	Contact guard	With
Suction nominal pressure	PN 16	Impeller diameter	198.0 mm
Suction position	axial	Direction of rotation from drive	Clockwise
Suction flange drilled according to standard	EN1092-2	Silicon free pump assembly	Yes
Discharge nominal dia.	DN 80	Bearing bracket construction	Standard (normal)
Discharge nominal pressure	PN 16	Bearing bracket size	WE35
Discharge position	top (0°/360°)	Bearing seal	V ring
Discharge flange drilled according to standard	EN1092-2	Bearing type	Anti-friction bearings
Shaft seal	Single acting mechanical seal	Lubrication type	Grease
		Color	Ultramarine blue (RAL 5002) KSB-blue
Shaft seal manufacturer	KSB		
Shaft seal type	1		

**Driver, accessories**

Driver type	Electric motor	Rated power P2	11.00 kW
Drive standard mech.	IEC	Available reserve	35.06 %
Drive supplied by	without motor	Number of poles	2
Motor const. type	B3	Motor data can vary from type plate information. Motor data describes KSB's choice functional specification and is used for pump selection.	
Motor size	160M	EAC Approval	Yes
Frequency	50 Hz		

**ETPL080-080-200 GG I10A301102 B**

Standardised KSB pump

**Materials G**

**Notes 1**

General criteria for a water analysis: pH-value  $\geq 6,5$ ; chloride content (Cl)  $\leq 250$  mg/kg. Chlorine (Cl<sub>2</sub>)  $\leq 0.6$  mg/kg.

Volute casing (102)	Grey cast iron EN-GJL-250/A48CL35B
Casing cover (161)	Grey cast iron EN-GJL-250/A48CL35B
Shaft (210)	Tempered steel C45+N

Impeller (230)
Bearing bracket (330)
O-Ring (412)
Shaft sleeve (523)

Grey cast iron EN-GJL-250
Grey cast iron EN-GJL-250/A48CL35B
EPDM 80
Stainless steel 1.4571

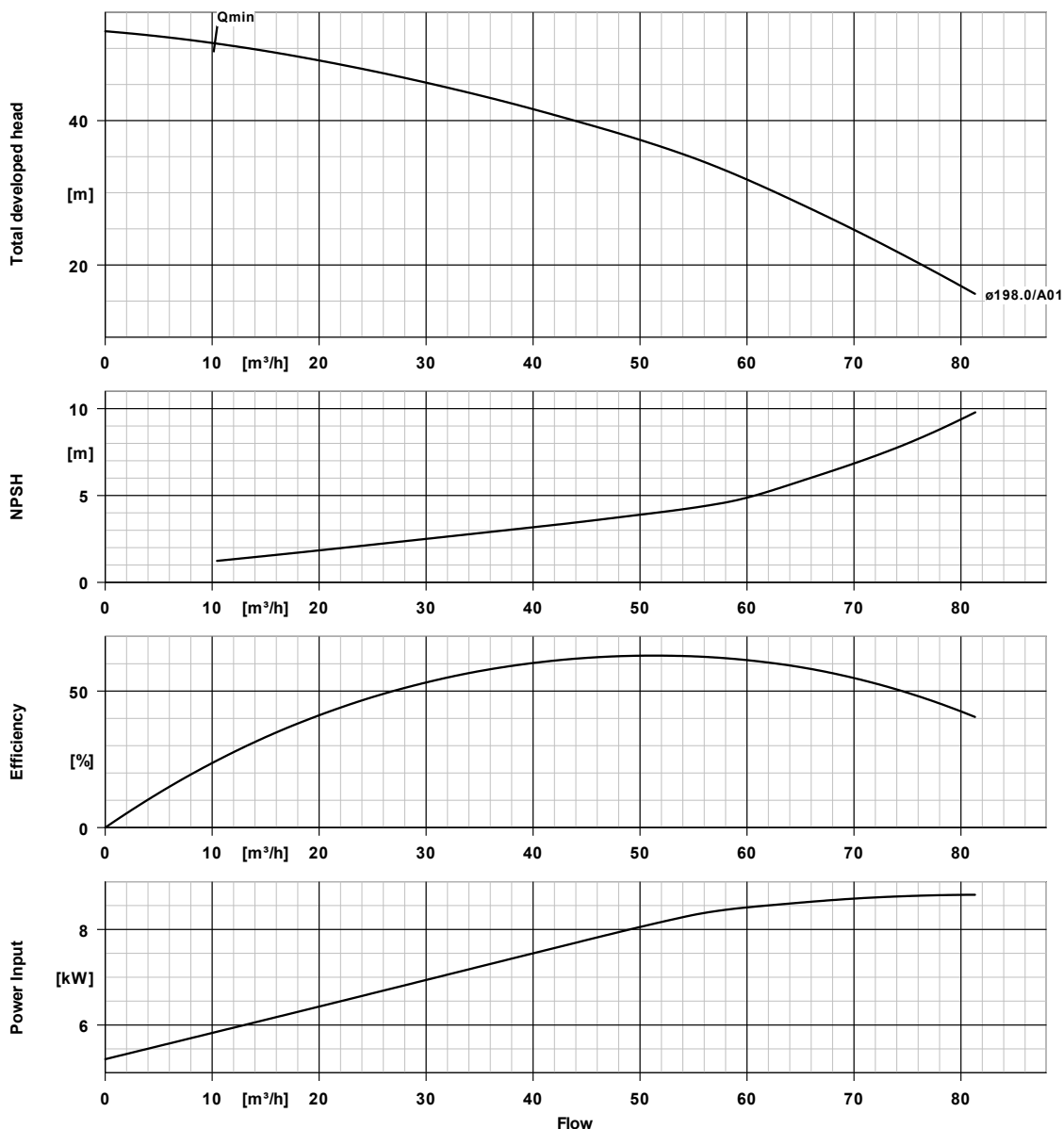
**Packaging**

Packaging category	A0 Packing acc. to KSB choice	Packaging for transport	Truck
Packaging for storage	Indoor		

**Nameplates**

Nameplates language	International
---------------------	---------------

**ETPL080-080-200 GG I10A301102 B**  
Standardised KSB pump

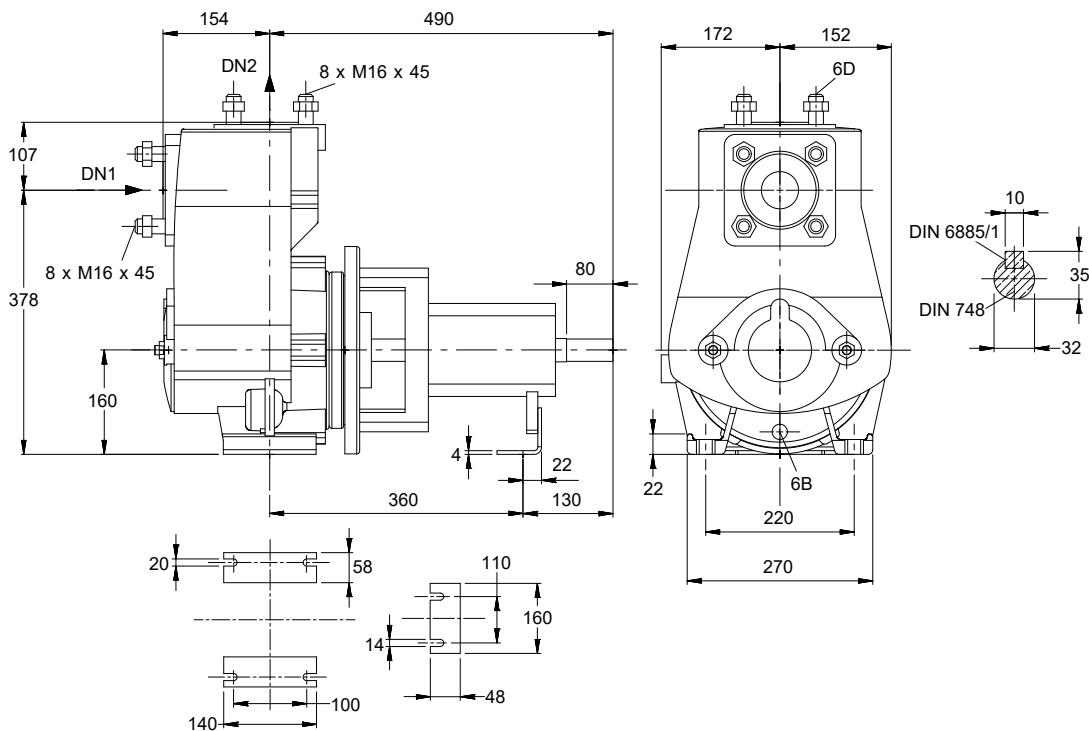


**Curve data**

Speed of rotation	2965 rpm	Efficiency	63.0 %
Fluid density	998 $kg/m^3$	Power absorbed	8.14 kW
Viscosity	1.00 $mm^2/s$	NPSHR	4.04 m
Flow rate	51.75 $m^3/h$	Curve number	K2745.V124701
Total developed head	36.50 m	Effective impeller diameter	198.0 mm

**ETPL080-080-200 GG I10A301102 B**

Standardised KSB pump



*Drawing is not to scale*

*Dimensions in mm*

**Motor**

required but not scope of supply

Motor size	160M
Motor power	11.00 kW
Number of poles	2
Speed of rotation	2967 rpm

**Connections**

Suction nominal size DN1	DN 80 / EN1092-2
Discharge nominal size DN2	DN 80 / EN1092-2
Nominal pressure suct.	PN 16
Rated pressure disch.	PN 16

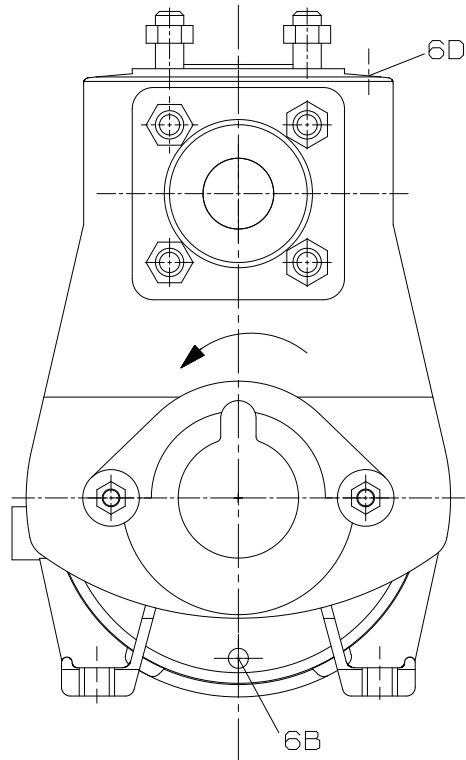
**Weight net**

Pump	93 kg
Total	93 kg

**Connect pipes without stress or strain!**

**For auxiliary connections see separate drawing.**

**ETPL080-080-200 GG I10A301102 B**  
Standardised KSB pump



**Connections**

6B Pumped liquid drain

G 1/2

Drilled and plugged.

6D Pumped medium - filling / venting

G 1/2

Drilled and plugged.