

Sewabloc K 80-315G H 200L 02

Operating data

Requested flow rate		Actual flow rate	100.00 m ³ /h
Requested developed head		Actual developed head	40.00 m
Pumped medium	Water	Efficiency	63.2 %
	Clean water	Power absorbed	17.21 kW
Pumped medium details	Not containing chemical and mechanical substances which affect the materials	Pump speed of rotation	2975 rpm
		NPSH 3%	5.61 m
Max. ambient air temperature	20.0 °C	Permissible operating pressure	10.00 bar.g
Min. ambient air temperature	20.0 °C	Discharge press.	3.91 bar.g
Fluid temperature	20.0 °C		
Fluid density	998 kg/m ³	Shutoff head	57.22 m
Fluid viscosity	1.00 mm ² /s	Min. allowable flow rate	40.42 m ³ /h
Suction pressure max.	0.00 bar.g	Min. allow. mass flow	11.21 kg/s
Mass flow rate	27.71 kg/s	Design	Single system 1 x 100 %
Max. power on curve	21.01 kW		Tolerances to ISO 9906 Class 3B; below 10 kW acc. to paragraph 4.4.2
Max. allow. mass flow	62.69 kg/s		

Design

Pump standard	KSB-Aggregate international execution	Shaft seal manufacturer	KSB
Design	Close-coupled	Type	MG
Orientation	Horizontal	Material code	SIC/SIC/NBR
Suction nominal dia.	DN 100	Impeller type	Multivane radial flow impeller (K)
Suction nominal pressure	PN 16	Wear ring	Casing wear ring
Suction position	axial	Impeller diameter	201.0 mm
Discharge nominal dia.	DN 80	Free passage size	33 mm
Discharge nominal pressure	PN 16	Direction of rotation from drive	Clockwise
Discharge position	top (0°/360°)	Bearing bracket size	B03
Discharge flange drilled according to standard	EN 1092-2	Bearing type	Anti-friction bearings
Suction nozzle drilled acc. to DIN2501 with tapped blind holes		Lubrication type	Grease
Shaft seal	2 mech. seals in tandem arrangement with oil reservoir	Color	Ultramarine blue (RAL 5002) KSB-blue

Sewabloc K 80-315G H 200L 02

Driver, accessories

Baseplate type	Sewatec foundation rails	Available reserve	74.31 %
Baseplate size	U80X1050a	Rated current	53.0 A
Baseplate drain piping material		Starting current ratio	7
Объем установочных деталей: фундаментные рельсы.		Insulation class	F to IEC 34-1
Driver type	Electric motor	Motor enclosure	IP55
Drive standard mech.	IEC	Cos phi at 4/4 load	0.87
Model (make)	Siemens	Motor efficiency at 4/4 load	92.0 %
Drive supplied by	Standard motor supplied by KSB - mounted by KSB	Temperature sensor	3 PTC resistors
Motor const. type	V15	Motor winding	400 / 690 V
Motor size	200L	Number of poles	2
Efficiency class	Efficiency class IE3 acc. to IEC60034-30-1	Connection mode	Delta
Motor speed	2974 rpm	Motor cooling method	Surface cooling
Frequency	50 Hz	Motor material	Aluminium
Designed for operation with frequency inverter	Yes	Frequency inverter operation allowed	FI allowed
Rated voltage	400 V	Motor noise pressure level	73 dBa
Rated power P2	30.00 kW	Sewaslide	With maintenance slide
		EAC Approval	Yes

Materials G

Notes		Impeller (230)	Grey cast iron EN-GJL-250
General criteria for a water analysis: pH-value ≥ 7 ; chloride content (Cl) ≤ 250 mg/kg. Chlorine (Cl ₂) ≤ 0.6 mg/kg.		O-Ring (412)	Nitrile rubber NBR
Pump casing (101)	Grey cast iron EN-GJL-250	Casing wear ring (502.1)	CrNi steel VG434
Discharge cover (163)	Grey cast iron EN-GJL-250	Screwed plug (903)	Steel ST
Shaft (210)	Chrome steel 1.4021+QT800	Hexagon socket head cap screw (914)	Chrome steel CrSt

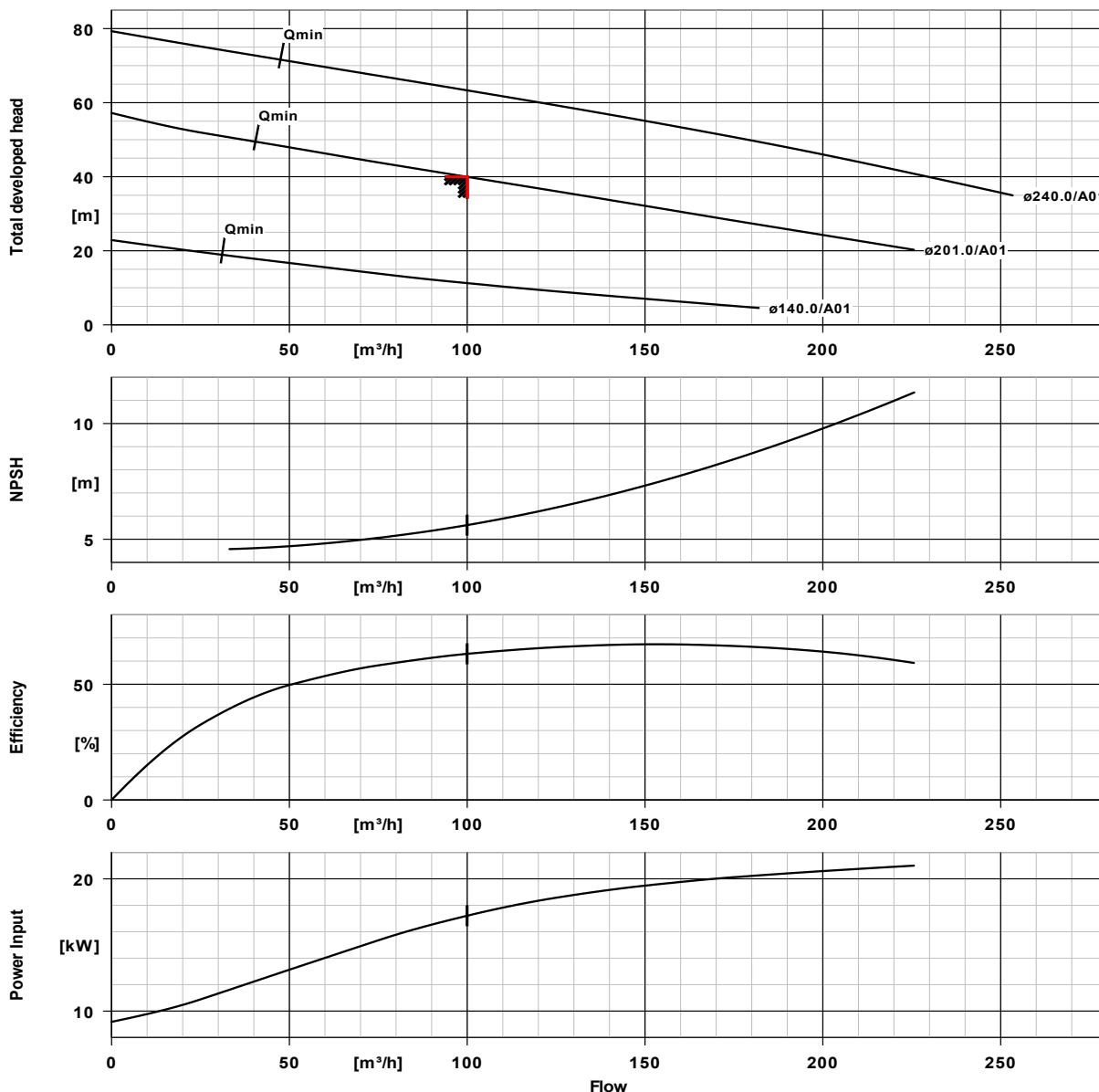
Packaging

Packaging for transport	Truck	Packaging for country	Germany
Packaging for storage	Indoor	Packaging category	A0 Packing acc. to KSB choice

Nameplates

Nameplates language	International
---------------------	---------------

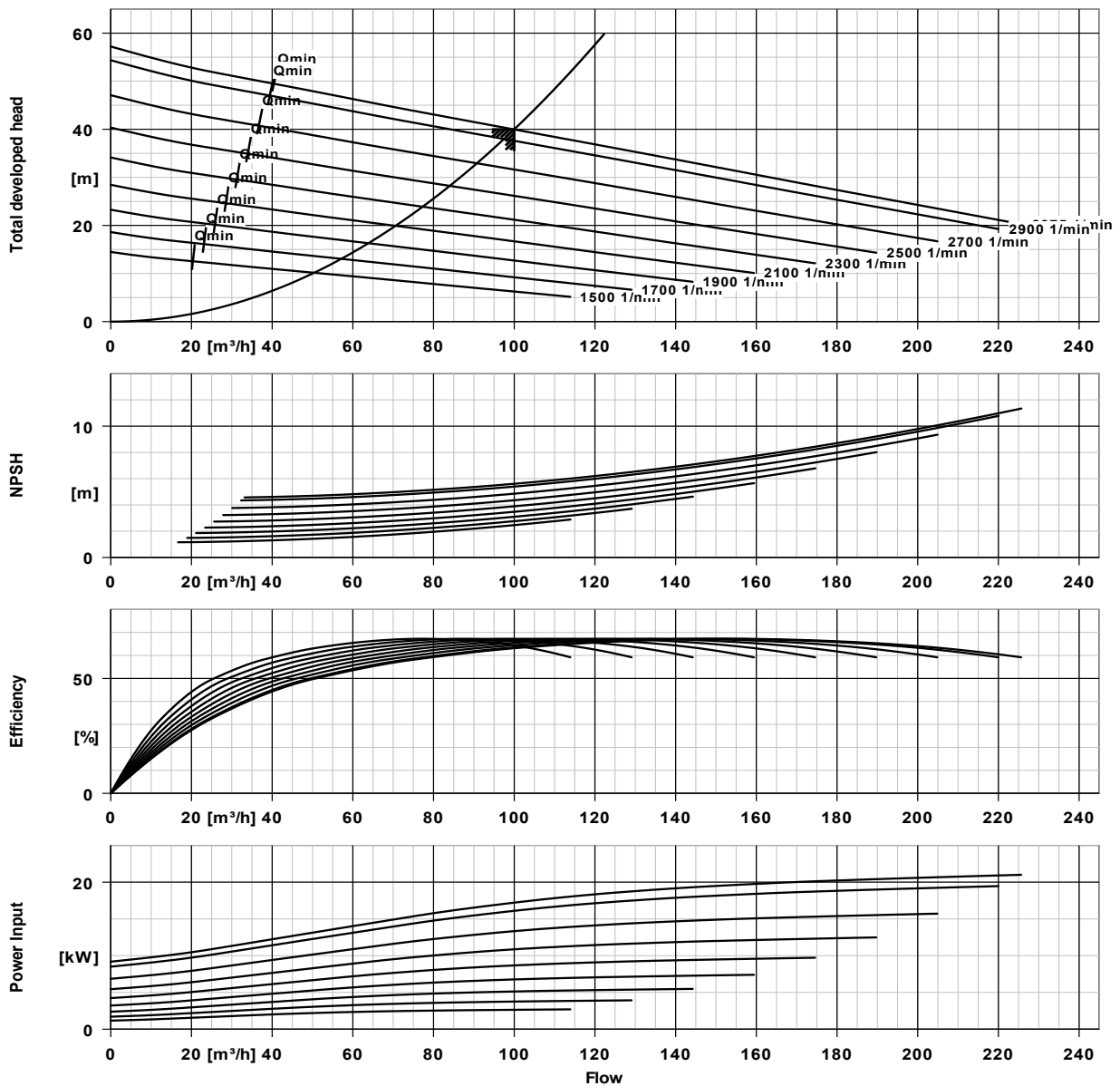
Sewabloc K 80-315G H 200L 02



Curve data

Speed of rotation	2975 rpm	Efficiency	63.2 %
Fluid density	998 kg/m^3	Power absorbed	17.21 kW
Viscosity	1.00 mm^2/s	NPSH req. 3%	5.61 m
Flow rate	100.00 m^3/h	Curve number	K42433/4
Requested flow rate	100.00 m^3/h	Effective impeller diameter	201.0 mm
Total developed head	40.00 m	Acceptance standard	Tolerances to ISO 9906
Requested developed head	40.00 m		Class 3B; below 10 kW
			acc. to paragraph 4.4.2

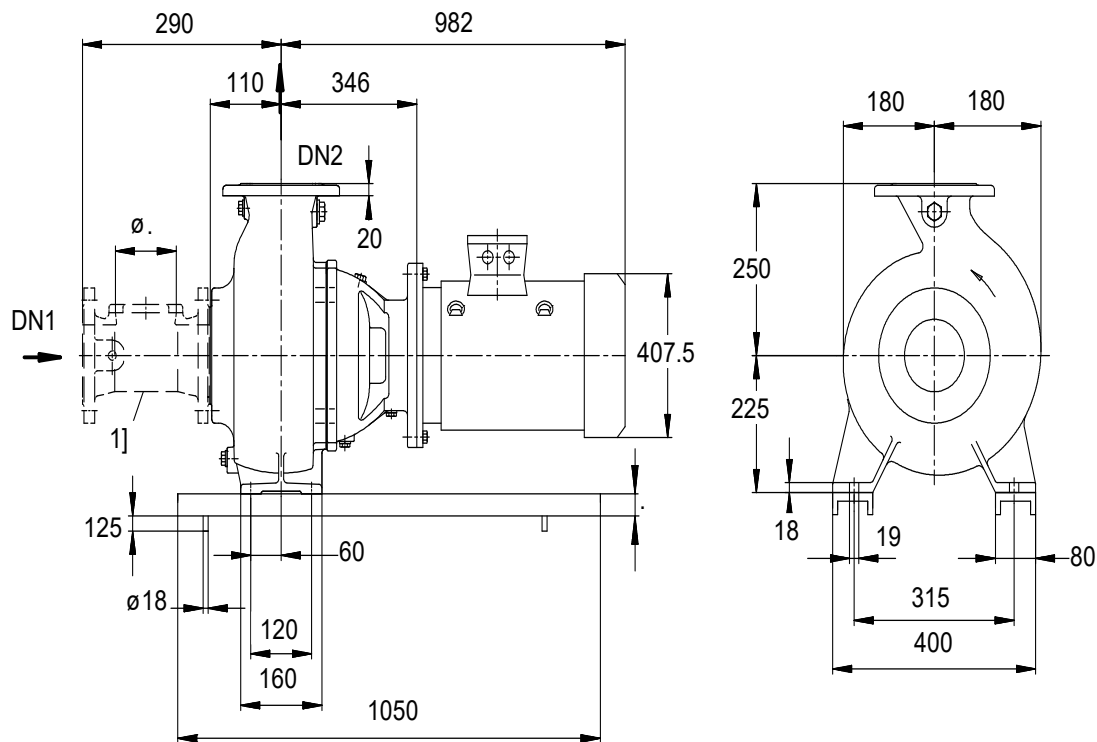
Sewabloc K 80-315G H 200L 02



Curve data

Fluid density	998 kg/m^3	Total developed head	40.00 m
Viscosity	1.00 mm^2/s	Requested developed head	40.00 m
Flow rate	100.00 m^3/h	Effective impeller diameter	201.0 mm
Requested flow rate	100.00 m^3/h		

Sewabloc K 80-315G H 200L 02



1] The inlet flange spacer is available as an accessory

Drawing is not to scale

Dimensions in mm

Motor

Motor manufacturer	Siemens
Motor size	200L
Motor power	30.00 kW
Number of poles	2
Speed of rotation	2974 rpm

Connections

Suction nominal size DN1	DN 100 / EN 1092-2
Discharge nominal size DN2	DN 80 / EN 1092-2
Nominal pressure suct.	PN 16
Rated pressure disch.	PN 16
Suction nozzle drilled acc. to DIN2501 with tapped blind holes	

Baseplate

Design	Sewatec foundation rails
Size	U80X1050a
Material	Steel ST
Leakage drain baseplate (8B)	Rp1, Without
Baseplate drain piping execution	Without

Weight net

Pump	119 kg
Baseplate	19 kg
Suction side accessory	
Motor	173 kg
Total	311 kg

Connect pipes without stress or strain!

Dimensional tolerances for shaft axis height:

DIN 747

For auxiliary connections see separate drawing.

Sewabloc K 80-315G H 200L 02

Dimensions without tolerances, middle tolerances to:

Connection dimensions for pumps:

Dimensions without tolerances - welded parts:

Dimensions without tolerances - gray cast iron parts:

ISO 2768-m

EN735

ISO 13920-B

ISO 8062-CT9