

ETL 125-125-200 GGS AV11D300554 BKSBIE3

Inline pump

Operating data

Requested flow rate	120.00 m³/h	Actual flow rate	120.01 m³/h
Requested developed head	10.00 m	Actual developed head	10.00 m
Pumped medium	Water, heating water Heating water up to 100°C (max.), acc. to VDI 2035	Efficiency	75.1 %
Pumped medium details	Not containing chemical and mechanical substances which affect the materials	MEI (Minimum Efficiency Index)	≥ 0.60
Max. ambient air temperature	20.0 °C	Power absorbed	4.20 kW
Min. ambient air temperature	20.0 °C	Pump speed of rotation	1474 rpm
Fluid temperature	90.0 °C	NPSH required	1.87 m
		Permissible operating pressure	16.00 bar.g
Fluid density	965 kg/m³	Discharge press.	0.95 bar.g
Fluid viscosity	0.33 mm²/s	Shutoff head	12.71 m
Suction pressure max.	0.00 bar.g	Min. allow. flow for continuous stable operation	35.92 m³/h
Mass flow rate	32.18 kg/s	Min. allow. mass flow for continuous stable operation	9.63 kg/s
Max. power on curve	4.90 kW	Design	Single system 1 x 100 % Tolerances to ISO 9906 Class 3B; below 10 kW acc. to paragraph 4.4.2
Max. allow. mass flow	55.82 kg/s		

Design

Pump standard	Without	Material code	BQ1EGG-WA
Caution: The overall length from suction to discharge can be different to the previous generation of Etaline.		Shaft seal code	11
Design	Close-coupled in-line	Sealing plan	Single-acting mechanical seal with vented chamber (A-type casing cover, taper bore)
Orientation	Vertical	Minimum requirements for hot water quality: treatment acc. to VdTÜV regulation TCH 1466 and solids content up to max. 5 mg/l.	
Suction nominal dia.	DN 125	Seal chamber design	Conical seal chamber (A-type cover)
Suction nominal pressure	PN 16	Contact guard	With
Suction position	180° (down)	Wear ring	Casing wear ring
Suction flange drilled according to standard	EN1092-2	Impeller diameter	189.0 mm
Discharge nominal dia.	DN 125	Free passage size	17.9 mm
Discharge nominal pressure	PN 16	Direction of rotation from drive	Clockwise
Discharge position	top (0°/360°)	Silicon free pump assembly	Yes
Discharge flange drilled according to standard	EN1092-2	Bearing bracket construction	Close-coupled
Surface type	Raised face (form B to EN 1092)	Bearing bracket size	35
Shaft seal	Single acting mechanical seal	Bearing type	Anti-friction bearings
Shaft seal manufacturer	KSB	Lubrication type	Grease
Shaft seal type	1	Color	Vermilion (RAL 2002)

Data sheet



Customer item no.:
Communication dated:
Doc. no.: Offre rapide
Quantity: 1

Number: ES 8001456979
Item no.: 100
Date: 12/10/2021
Page: 2 / 6

ETL 125-125-200 GGS AV11D300554 BKSBIE3
Inline pump

Version no.: 1

Driver, accessories

Driver type	Electric motor	Motor efficiency at 4/4 load	89.6 %
Drive standard mech.	IEC	Temperature sensor	3 PTC resistors
Model (make)	KSB-Motor	Terminal box position	0° same orientation
Drive supplied by	Standard motor supplied by KSB - mounted by KSB	Motor winding	400 / 690 V
Motor const. type	V1	Number of poles	4
Motor size	132S	Connection mode	Delta
Efficiency class	Efficiency class IE3 acc. to IEC60034-30-1	Motor cooling method	Surface cooling
Motor speed	1475 rpm	Motor material	Aluminium
Frequency	50 Hz	Frequency inverter operation allowed	FI allowed
Rated voltage	400 V	Motor noise pressure level	67 dBa
Rated power P2	5.50 kW	Motor data can vary from type plate information. Motor data describes KSB's choice functional specification and is used for pump selection.	
Available reserve	12.33 %	CE-approval	Yes
Rated current	11.0 A	Condensat drain motor	Yes
Starting current ratio	8.9	Ambient temperature	40
Insulation class	F to IEC 34-1	Max. absolute humidity	30
Motor enclosure	IP55	Temp. sensor mtr. bearing	Without
Cos phi at 4/4 load	0.80		

Materials G

Notes 1

Unalloyed cast iron components: pH = 9 to 10.5 and O2 content <= 0.02 mg/kg.

Volute casing (102)	Grey cast iron EN-GJL-250/A48CL35B
Casing cover (161)	Grey cast iron EN-GJL-250/A48CL35B
Shaft (210)	Tempered steel C45+N
Impeller (230)	Grey cast iron EN-GJL-250/A48CL35B
Motor stool (341)	Grey cast iron EN-GJL-250/A48CL35B
Flat gasket (400)	DPAF seal plate asbestos free

Joint ring (411)	Steel ST
Casing wear ring (502.1)	Grey cast iron GG/CAST IRON
Casing wear ring (502.2)	Grey cast iron GG/CAST IRON
Shaft sleeve (523)	CrNiMo steel
Stud (902)	Steel 8.8
Impeller nut (922)	Steel 8
Key (940)	Steel C45+C / A311 GR 1045 CLASS A

Performance curve

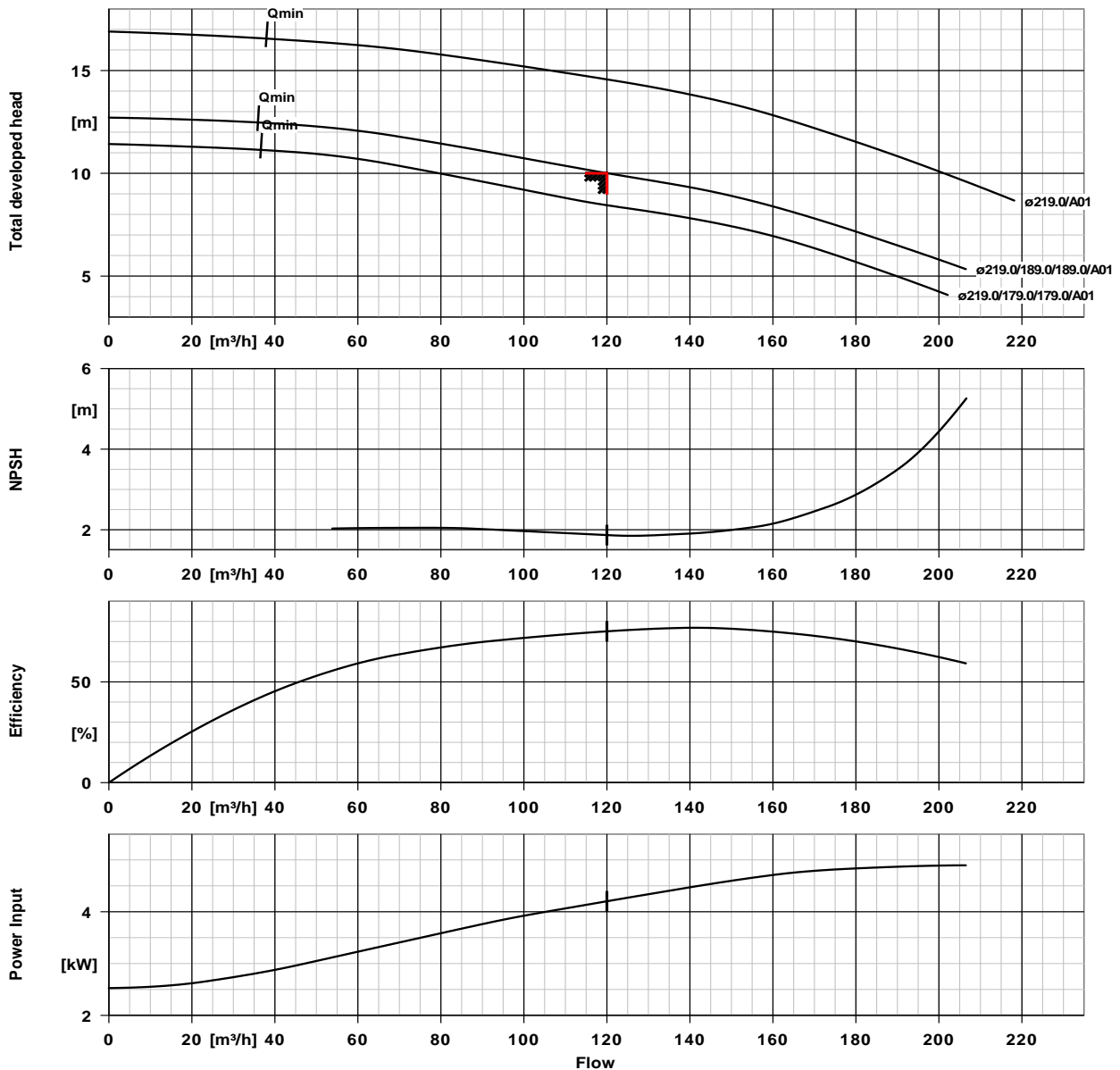


Customer item no.:
 Communication dated:
 Doc. no.: Offre rapide
 Quantity: 1

Number: ES 8001456979
 Item no.:100
 Date: 12/10/2021
 Page: 3 / 6

ETL 125-125-200 GGS AV11D300554 BKSBIE3
 Inline pump

Version no.: 1



Curve data

Speed of rotation	1474 rpm	Efficiency	75.1 %
Fluid density	965 kg/m³	MEI (Minimum Efficiency Index)	≥ 0.60
Viscosity	0.33 mm²/s	Power absorbed	4.20 kW
Flow rate	120.01 m³/h	NPSH required	1.87 m
Requested flow rate	120.00 m³/h	Curve number	K1159.454/46
Total developed head	10.00 m	Effective impeller diameter	189.0 mm
Requested developed head	10.00 m	Acceptance standard	Tolerances to ISO 9906 Class 3B; below 10 kW acc. to paragraph 4.4.2

Installation plan



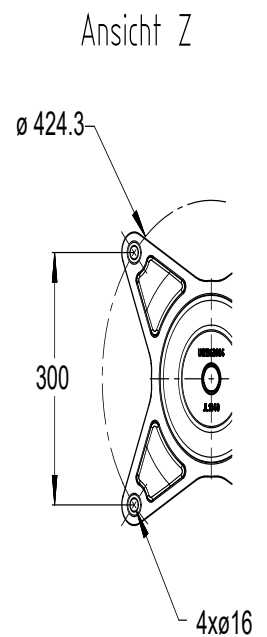
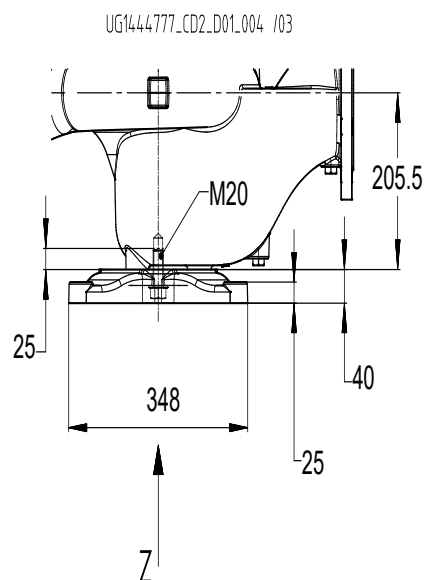
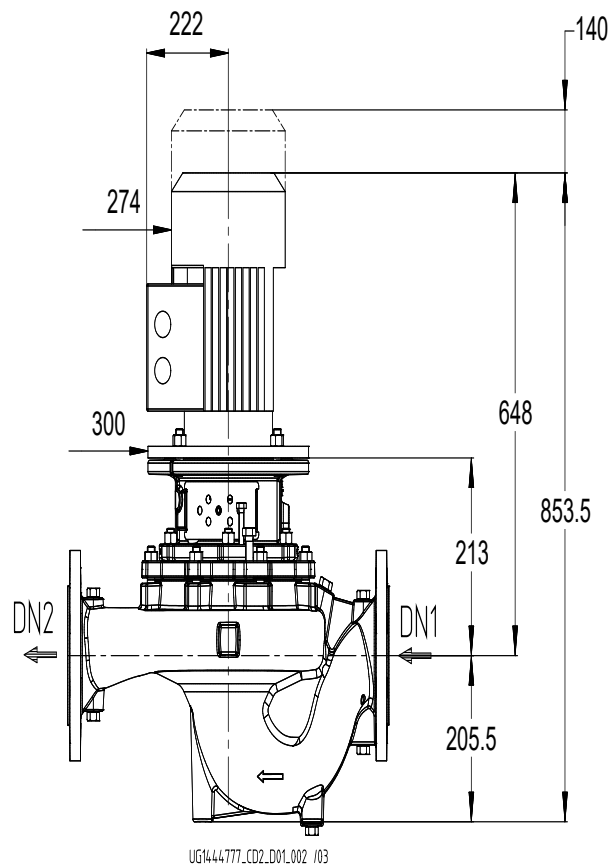
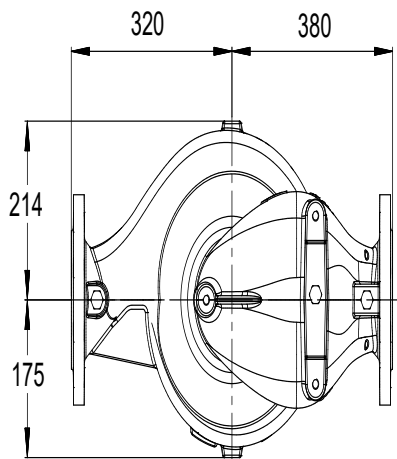
Customer item no.:
Communication dated:
Doc. no.: Offre rapide
Quantity: 1

Number: ES 8001456979
Item no.:100
Date: 12/10/2021
Page: 4 / 6

ETL 125-125-200 GGS AV11D300554 BKS BIE3

Version no.: 1

Inline pump



Drawing is not to scale

Dimensions in mm

Installation plan



Customer item no.:
Communication dated:
Doc. no.: Offre rapide
Quantity: 1

Number: ES 8001456979
Item no.:100
Date: 12/10/2021
Page: 5 / 6

ETL 125-125-200 GGS AV11D300554 BKS BIE3
Inline pump

Version no.: 1

Motor

Motor manufacturer	KSB-Motor
Motor size	132S
Motor power	5.50 kW
Number of poles	4
Speed of rotation	1475 rpm
Position of terminal box	0° same orientation Viewed from the drive

Connections

Suction nominal size DN1	DN 125 / EN1092-2
Discharge nominal size DN2	DN 125 / EN1092-2
Nominal pressure suct.	PN 16
Rated pressure disch.	PN 16

Weight net

Pump	95 kg
Motor	67 kg
Total	162 kg

Connect pipes without stress or strain!

For auxiliary connections see separate drawing.

Connection plan

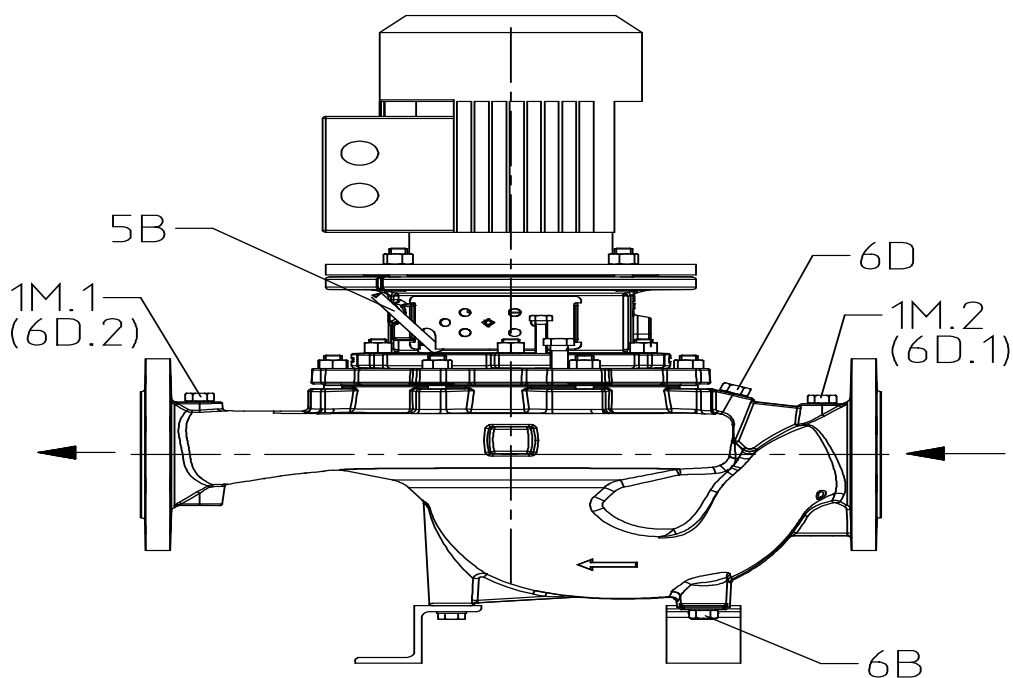


Customer item no.:
Communication dated:
Doc. no.: Offre rapide
Quantity: 1

Number: ES 8001456979
Item no.:100
Date: 12/10/2021
Page: 6 / 6

ETL 125-125-200 GGS AV11D300554 BKSBIE3
Inline pump

Version no.: 1



UG1444722_D01_003/ 02

Connections

Pump casing variant		XX46
1M.1 Pressure gauge connection	G 1/2	Drilled and plugged.
1M.2 Pressure gauge connection	G 1/2	Drilled and plugged.
6B Pumped liquid drain	G 1/2	Drilled and plugged.
6D Pumped medium - filling / venting	G 1/2	Drilled and plugged.
5B venting	G 1/4	Closed with venting plug