

ETL 080-080-160 GGS AV06A200552 BKSBIE3

Inline pump

Operating data

| | | | |
|------------------------------|---|---|---|
| Requested flow rate | 48.00 m ³ /h | Actual flow rate | 48.03 m ³ /h |
| Requested developed head | 25.00 m | Actual developed head | 25.03 m |
| Pumped medium | Water, high-temperature hot water High-temperature hot water treated to VdTÜV 1466 | Efficiency | 66.6 % |
| | | MEI (Minimum Efficiency Index) | ≥ 0.70 |
| Pumped medium details | Not containing chemical and mechanical substances which affect the materials | Power absorbed | 4.64 kW |
| | | Pump speed of rotation | 2942 rpm |
| Max. ambient air temperature | 20.0 °C | NPSH required | 2.77 m |
| Min. ambient air temperature | 20.0 °C | Permissible operating pressure | 16.00 bar.g |
| Fluid temperature | 120.0 °C | | |
| Fluid density | 943 kg/m ³ | Discharge press. | 4.29 bar.g |
| Fluid viscosity | 0.26 mm ² /s | Shutoff head | 28.30 m |
| Suction pressure max. | 1.98 bar.g | Min. allow. flow for continuous stable operation | 23.41 m ³ /h |
| Mass flow rate | 12.58 kg/s | Min. allow. mass flow for continuous stable operation | 6.13 kg/s |
| Max. power on curve | 6.53 kW | Design | Single system 1 x 100 % Tolerances to ISO 9906 Class 3B; below 10 kW acc. to paragraph 4.4.2 |
| Max. allow. mass flow | 39.15 kg/s | | |

Design

| | | | |
|---|---------------------------------|---|---|
| Pump standard | Without | Material code | U3BEGG |
| Caution: The overall length from suction to discharge can be different to the previous generation of Etaline. | | Shaft seal code | 6 |
| Design | Close-coupled in-line | Sealing plan | Single-acting mechanical seal with vented chamber (A-type casing cover, taper bore) |
| Orientation | Vertical | Minimum requirements for hot water quality: treatment acc. to VdTÜV regulation TCH 1466 and solids content up to max. 5 mg/l. | |
| Suction nominal dia. | DN 80 | Seal chamber design | Conical seal chamber (A-type cover) |
| Suction nominal pressure | PN 16 | Contact guard | With |
| Suction position | 180° (down) | Wear ring | Casing wear ring |
| Suction flange drilled according to standard | EN1092-2 | Impeller diameter | 140.0 mm |
| Discharge nominal dia. | DN 80 | Free passage size | 12.2 mm |
| Discharge nominal pressure | PN 16 | Direction of rotation from drive | Clockwise |
| Discharge position | top (0°/360°) | Silicon free pump assembly | Yes |
| Discharge flange drilled according to standard | EN1092-2 | Bearing bracket construction | Close-coupled |
| Surface type | Raised face (form B to EN 1092) | Bearing bracket size | 25 |
| Shaft seal | Single acting mechanical seal | Bearing type | Anti-friction bearings |
| Shaft seal manufacturer | Burgmann | Lubrication type | Grease |
| Shaft seal type | RMG13G606 | Color | Vermilion (RAL 2002) |

ETL 080-080-160 GGS AV06A200552 BKSBIE3

Inline pump

Driver, accessories

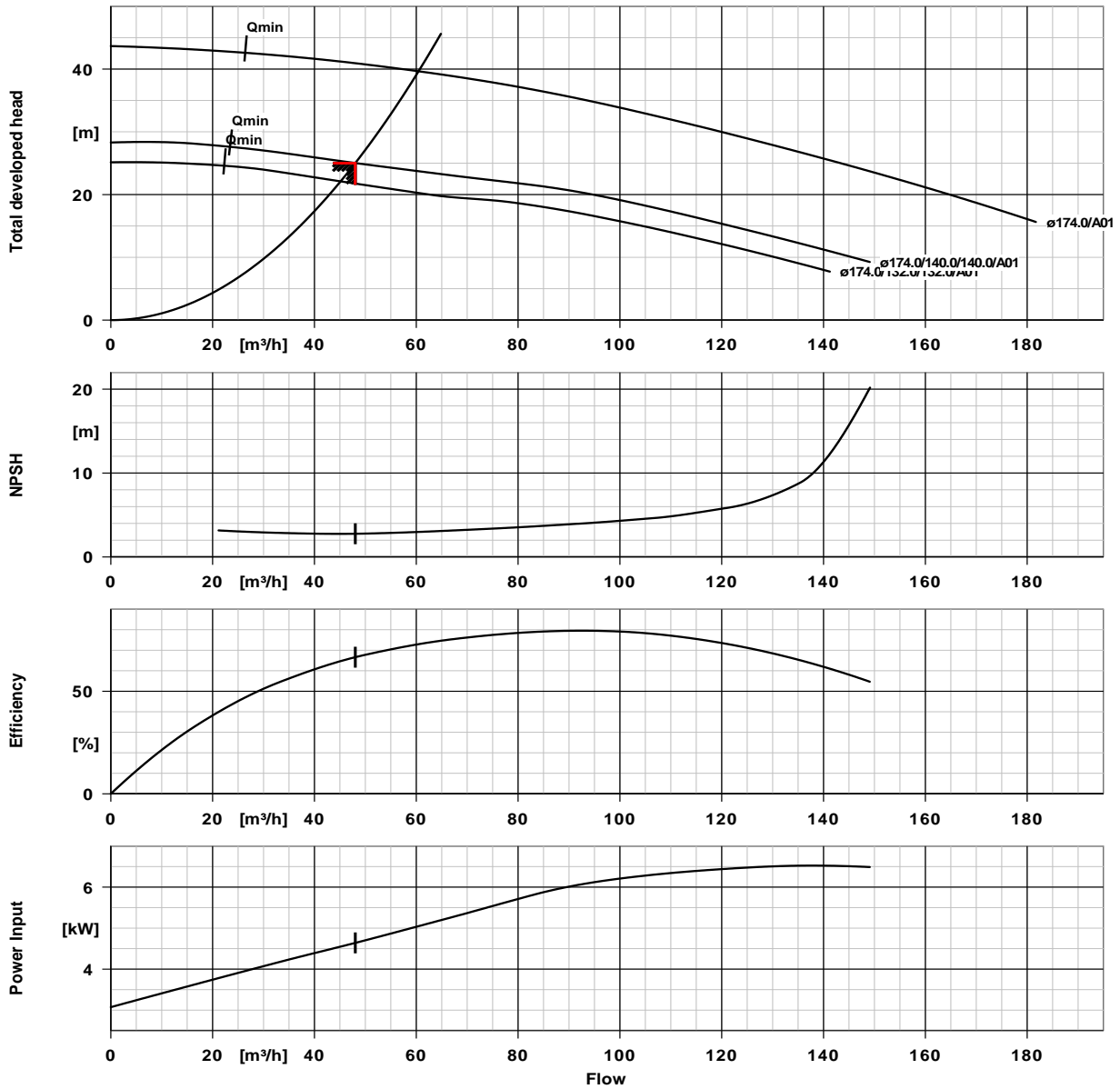
| | | | |
|----------------------|----------------|---|---------|
| Driver type | Electric motor | Number of poles | 2 |
| Drive standard mech. | IEC | Motor data can vary from type plate information. Motor data describes KSB's choice functional specification and is used for pump selection. | |
| Drive supplied by | without motor | CE-approval | Yes |
| Motor const. type | V1 | Condensat drain motor | Yes |
| Motor size | 132S | Ambient temperature | 40 |
| Frequency | 50 Hz | Max. absolute humidity | 30 |
| Rated power P2 | 5.50 kW | Temp. sensor mtr. bearing | Without |
| Available reserve | 18.51 % | | |

Materials G**Notes 1**

Unalloyed cast iron components: pH = 9 to 10.5 and O₂ content <= 0.02 mg/kg.

| | | | |
|---------------------|------------------------------------|--------------------------|------------------------------------|
| Volute casing (102) | Grey cast iron EN-GJL-250/A48CL35B | Joint ring (411) | Steel ST |
| Casing cover (161) | Grey cast iron EN-GJL-250/A48CL35B | Casing wear ring (502.1) | Grey cast iron GG/CAST IRON |
| Shaft (210) | Tempered steel C45+N | Casing wear ring (502.2) | Grey cast iron GG/CAST IRON |
| Impeller (230) | Grey cast iron EN-GJL-250/A48CL35B | Shaft sleeve (523) | CrNiMo steel |
| Motor stool (341) | Grey cast iron EN-GJL-250/A48CL35B | Stud (902) | Steel 8.8 |
| Flat gasket (400) | DPAF seal plate asbestos free | Impeller nut (922) | Steel 8 |
| | | Key (940) | Steel C45+C / A311 GR 1045 CLASS A |

ETL 080-080-160 GGS AV06A200552 BKSBIE3
 Inline pump

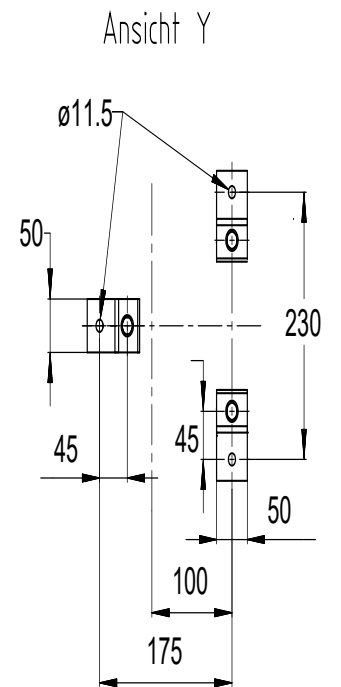
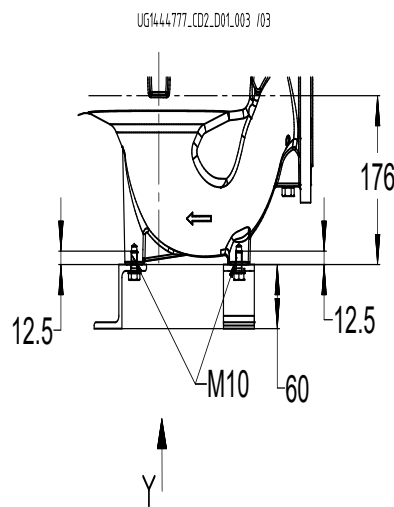
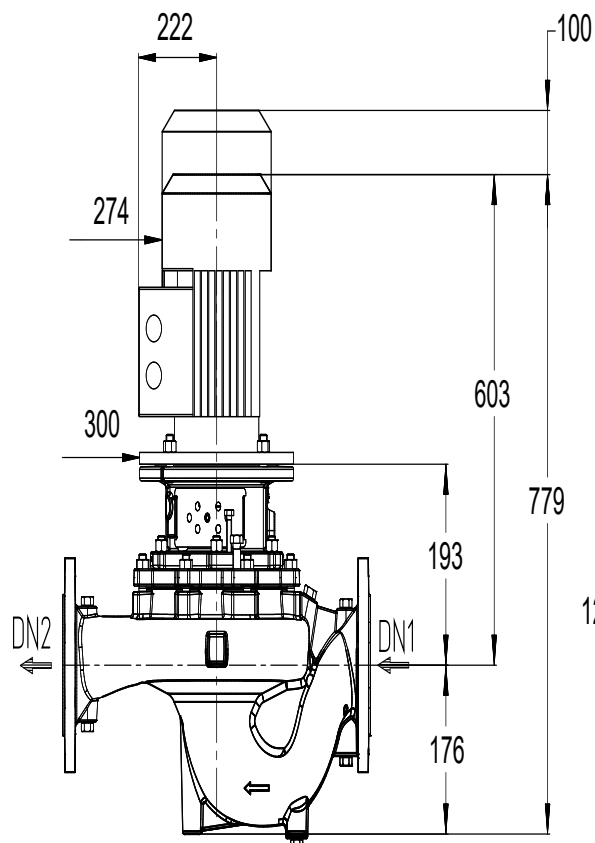
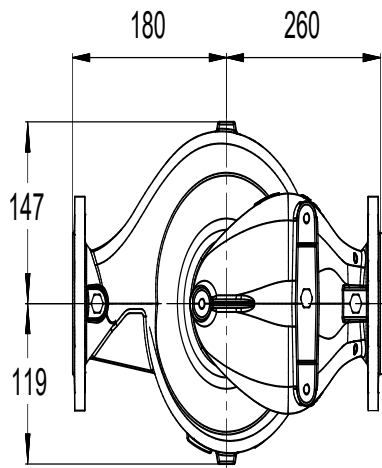


Curve data

| | | | |
|--------------------------|------------|--------------------------------|--|
| Speed of rotation | 2942 rpm | Efficiency | 66.6 % |
| Fluid density | 943 kg/m³ | MEI (Minimum Efficiency Index) | ≥ 0.70 |
| Viscosity | 0.26 mm²/s | Power absorbed | 4.64 kW |
| Flow rate | 48.03 m³/h | NPSH required | 2.77 m |
| Requested flow rate | 48.00 m³/h | Curve number | K1159.452/36 |
| Total developed head | 25.03 m | Effective impeller diameter | 140.0 mm |
| Requested developed head | 25.00 m | Acceptance standard | Tolerances to ISO 9906 Class 3B; below 10 kW acc. to paragraph 4.4.2 |

ETL 080-080-160 GGSAV06A200552 BKSBIE3

Inline pump



Drawing is not to scale

Dimensions in mm

ETL 080-080-160 GGSAV06A200552 BKSBI3

Inline pump

Motor

required but not scope of supply
Motor size 132S
Motor power 5.50 kW
Number of poles 2
Speed of rotation 2943 rpm

Connections

| | |
|----------------------------|------------------|
| Suction nominal size DN1 | DN 80 / EN1092-2 |
| Discharge nominal size DN2 | DN 80 / EN1092-2 |
| Nominal pressure suct. | PN 16 |
| Rated pressure disch. | PN 16 |

Weight net

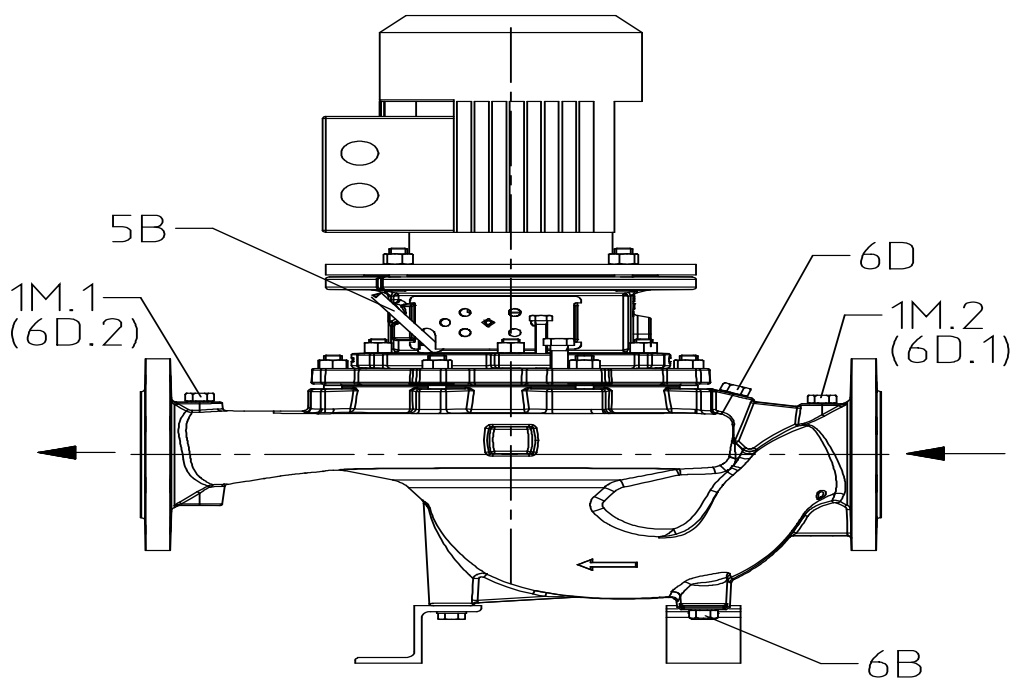
| | |
|-------|-------|
| Pump | 33 kg |
| Total | 33 kg |

Connect pipes without stress or strain!

For auxiliary connections see separate drawing.

ETL 080-080-160 GGSAV06A200552 BKSBIE3

Inline pump



UG1444722_D01_003/ 02

Connections

| | | |
|--------------------------------------|-------|--------------------------|
| Pump casing variant | | XX46 |
| 1M.1 Pressure gauge connection | G 3/8 | Drilled and plugged. |
| 1M.2 Pressure gauge connection | G 3/8 | Drilled and plugged. |
| 6B Pumped liquid drain | G 3/8 | Drilled and plugged. |
| 6D Pumped medium - filling / venting | G 3/8 | Drilled and plugged. |
| 5B venting | G 1/4 | Closed with venting plug |