

ETNV080-065-125 GGSW H10001102B

Operating data

Requested flow rate	70.00 m ³ /h	Actual flow rate	70.05 m ³ /h
Requested developed head	24.00 m	Actual developed head	24.03 m
Pumped medium	Water	Efficiency	71.4 %
	Clean water	Power absorbed	6.41 kW
Pumped medium details	Not containing chemical and mechanical substances which affect the materials	Pump speed of rotation	2971 rpm
		Shutoff head	25.19 m
Max. ambient air temperature	20.0 °C	Min. allow. flow for continuous stable operation	17.28 m ³ /h
Min. ambient air temperature	20.0 °C	Min. allow. mass flow for continuous stable operation	4.79 kg/s
Fluid temperature	20.0 °C		
Fluid density	998 kg/m ³	Max. allow. mass flow	44.54 kg/s
Fluid viscosity	1.00 mm ² /s	Design	Single system 1 x 100 %
Mass flow rate	19.42 kg/s		Tolerances to ISO 9906 Class 3B; below 10 kW acc. to paragraph 4.4.2
Max. power on curve	8.68 kW		

Design

Pump standard	EN 733	Wear ring	Casing wear ring
Design	Close-coupled	Impeller diameter	139.0 mm
Orientation	Vertical	Free passage size	12.9 mm
Installation depth	1000.0 mm	Direction of rotation from drive	Clockwise
Suction nominal dia.	DN 80	Silicon free pump assembly	Yes
Suction nominal pressure	PN 16	Bearing bracket construction	Standard (normal)
Suction position	axial	Bearing bracket size	25
Suction flange drilled according to standard	EN1092-2	Bearing seal	Flat gap
Discharge nominal dia.	DN 65	Bearing type	Plain bearings
Discharge nominal pressure	PN 16	Lubrication type	Medium lubricated
Discharge position	radial	Color	Ultramarine blue (RAL 5002)
Discharge flange drilled according to standard	EN1092-2		KSB-blue
Flanges DN 65 will be drilled with 4 holes		Cover plate	Without
Contact guard	With	Discharge pipe	Without
		Max speed allowed for	3000 rpm
		Immersion depth	

ETNV080-065-125 GGSW H10001102B

Driver, accessories

Frequency inverter operation allowed only for rated voltage.		Insulation class	F to IEC 34-1
Driver type	Electric motor	Motor enclosure	IP55
Drive standard mech.	IEC	Cos phi at 4/4 load	0.78
Model (make)	KSB-Motor	Motor efficiency at 4/4 load	91.2 %
Drive supplied by	Standard motor supplied by KSB - mounted by KSB	Temperature sensor	3 PTC resistors
Motor const. type	V1	Terminal box position	0° same orientation Viewed from the drive
Motor size	160M	Motor winding	400 / 690 V
Efficiency class	Efficiency class IE3 acc. to IEC60034-30-1	Number of poles	2
Motor speed	2972 rpm	Connection mode	Delta
Frequency	50 Hz	Motor cooling method	Surface cooling
Designed for operation with frequency inverter	Yes	Motor material	Aluminium
Rated voltage	400 V	Frequency inverter operation allowed	FI allowed
Rated power P2	11.00 kW	Motor noise pressure level	74 dBa
Available reserve	71.65 %	Motor data can vary from type plate information. Motor data describes KSB's choice functional specification and is used for pump selection.	
Rated current	22.0 A	EAC Approval	Yes
Starting current ratio	9		

Materials G

Notes 1

General criteria for a water analysis: pH-value $\geq 6,5$; chloride content (Cl) ≤ 250 mg/kg. Chlorine (Cl2) ≤ 0.6 mg/kg.

Volute casing (102)	Grey cast iron EN-GJL-250/A48CL35B	Casing wear ring (502.02)	Grey cast iron GG/CAST IRON
Casing cover (161)	Grey cast iron EN-GJL-250/A48CL35B	Cover plate (68-3.01)	Without
Shaft (210)	Tempered steel C45+N	Column pipe (711)	Without
Impeller (230)	Grey cast iron EN-GJL-250/A48CL35B	Support column (712)	Without
Motor stool (341)	Grey cast iron EN-GJL-250/A48CL35B	Holder (732)	Steel ST
Bearing cartridge (381)	1.4571-SIC	Tie bolt (905)	Steel 8.8
Casing wear ring (502.01)	Grey cast iron GG/CAST IRON	Nut (920.95)	Steel 8
		Key (940.01)	Steel 8

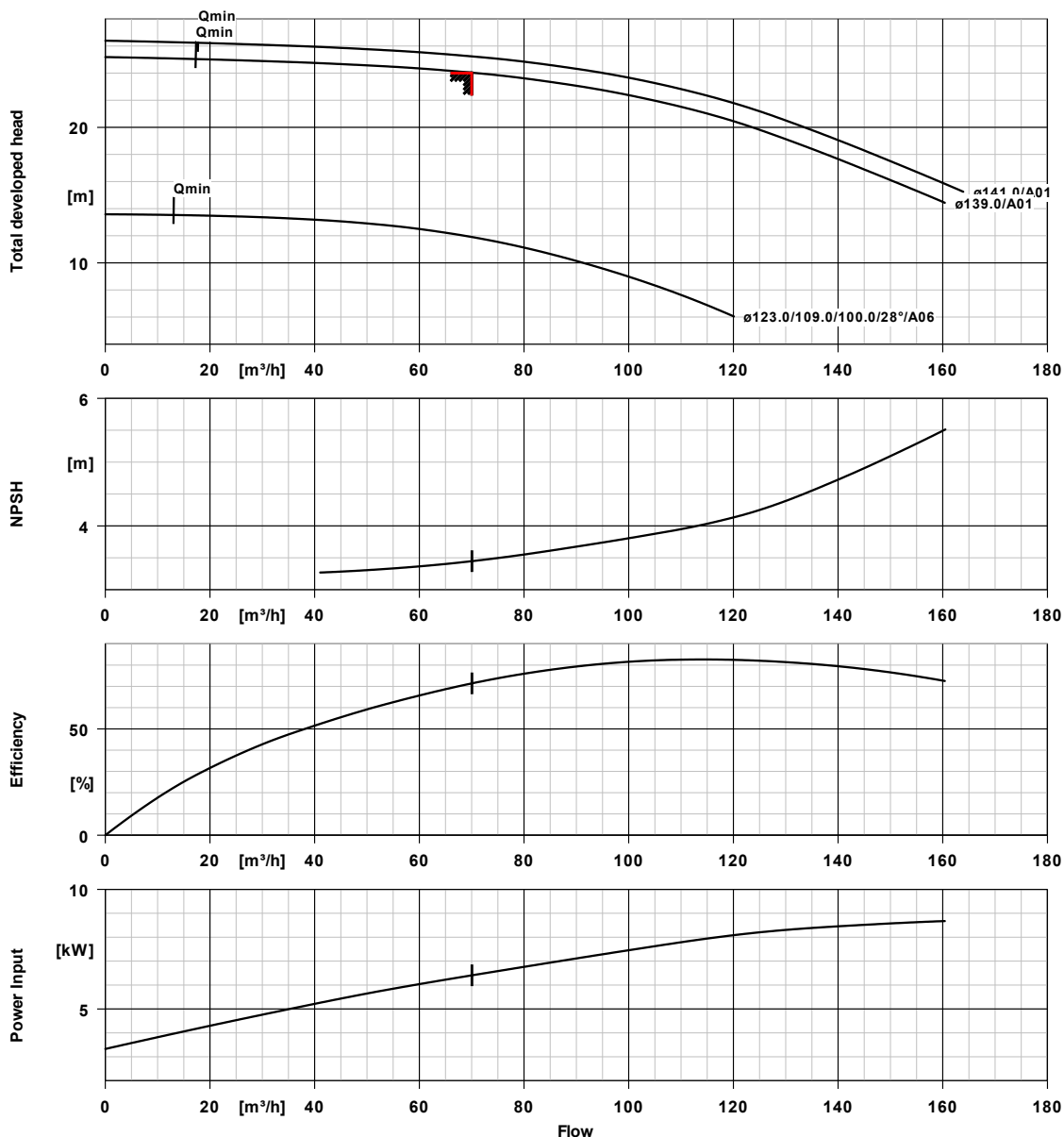
Packaging

Packaging category	A0 Packing acc. to KSB choice	Packaging for transport	Truck
Packaging for storage	Indoor		

Nameplates

Nameplates language	International
---------------------	---------------

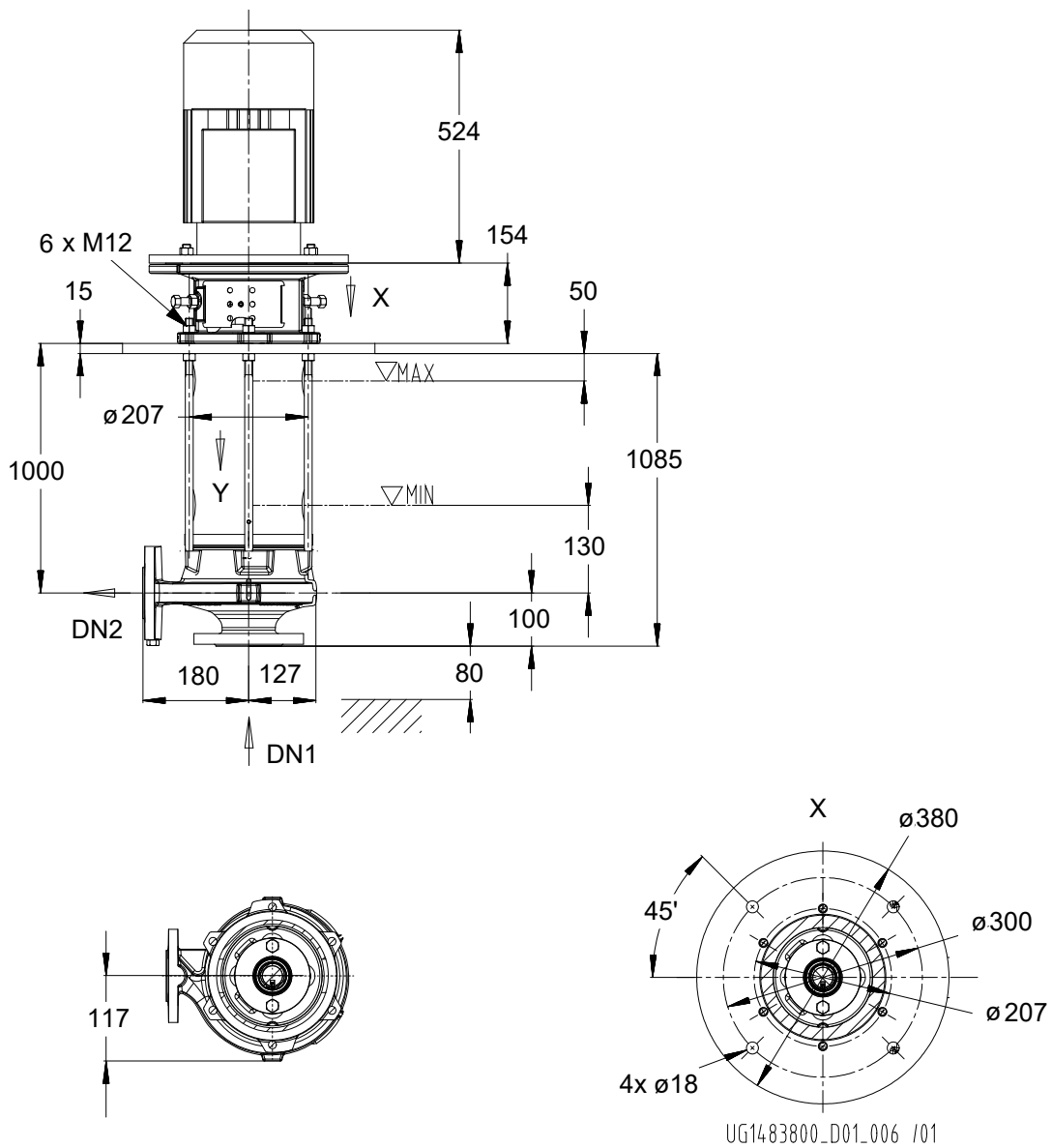
ETNV080-065-125 GGSW H10001102B



Curve data

Speed of rotation	2971 rpm	Requested developed head	24.00 m
Fluid density	998 kg/m^3	Efficiency	71.4 %
Viscosity	1.00 mm^2/s	Power absorbed	6.41 kW
Flow rate	70.05 m^3/h	NPSHR	3.45 m
Requested flow rate	70.00 m^3/h	Curve number	K1311.452/35
Total developed head	24.03 m	Effective impeller diameter	139.0 mm

ETNV080-065-125 GGSW H10001102B



ETNV080-065-125 GGSW H10001102B

Motor

Motor manufacturer	KSB-Motor
Motor size	160M
Motor power	11.00 kW
Number of poles	2
Speed of rotation	2972 rpm
Position of terminal box	0° same orientation Viewed from the drive

Connections

Suction nominal size DN1	DN 80 / EN1092-2
Discharge nominal size DN2	DN 65 / EN1092-2
Nominal pressure suct.	PN 16
Rated pressure disch.	PN 16

Flanges DN 65 will be drilled with 4 holes

Weight net

Pump	87 kg
Motor	75 kg
Total	162 kg

Connect pipes without stress or strain!