

Etanorm 100-080-315 GG
 ETN 100-080-315-GGSAA11 GSFEH4AHB

Nozzle connections pump

Nominal diameter Suction nozzle	DN 100	Nominal diameter Discharge nozzle	DN 80
Nominal pressure Suction nozzle	PN 16	Nominal pressure Discharge nozzle	PN 16
Suction nozzle position	Axial	Discharge nozzle position	0 deg
Suction nozzle design acc.to	EN1092-2	Discharge nozzle design acc.to	EN1092-2
Suction flange bolt hole pattern as per standard	EN1092-2	Discharge flange bolt hole pattern as per standard	EN1092-2
Flange facing type Inlet	Raised face (B,RF)		
Flange facing type Outlet	Raised face (B,RF)		

Auxiliary connections pump

6B Fluid Drain	G 3/8 Drilled and plugged	1M Pressure gauge Discharge nozzle	Without Without
6D Fluid Filling and venting	G 3/8 Drilled and plugged	1M Pressure gauge Suction nozzle	Without Without
8B Leakage Drain	G 1/2 Drilled		

Shaft sealing

Shaft seal type	Single mechanical seal (A-type cover) - A	Shaft seal code	Code 11
Operating mode of mechanical seal (function)	API plan 03	Shaft seal manufacturer inboard	KSB's choice
Determined pressure Seal chamber	-0.1 bar.r	Mechanical seal type inboard	KSB's choice
		Material Shaft seal inboard	BQEGG DW001

Etanorm 100-080-315 GG

ETN 100-080-315-GGSAA11 GSFEH4AHB

Materials

Material Volute casing	EN-GJL-250/A48 CL 35B	Material Bolts/Screws Volute casing	8.8
Material Casing cover	EN-GJL-250/A48 CL 35B	Material Nut Impeller fastening (ST)	
Material Shaft	C45+N		
Material Impeller	EN-GJL-250/A48 CL 35B		
Material Casing wear ring suction-side	JL/LAMELLAR GRAPHITE CAST IRON		
Material Casing wear ring discharge-side	JL/LAMELLAR GRAPHITE CAST IRON		
Material Shaft protecting sleeve	(CRNIMO ST INT)		
Material Bearing bracket	EN-GJL-250/A48 CL 35B		
Material Static seal Discharge cover	DPAF DW001		

Driver

Electric motor	No	Rated speed Motor	1,465 1/min
Drive concept	Electric actuator	Number of motor poles	4
Drive standard, mechanical	IEC	Rated power Motor	15 kW
Drive standard electric	IEC	Limit value Maximum humidity Motor	30 g/m ³
Motor construction type	IM B3 (IM1001) IEC 60034-7		
Motor size	160L		

Coating

Surface preparation	Aggregate
Properties Primer coat	Free from dirt, grease, rust
Thickness Primer coat	Hydro dip primer, water-dilutable
Properties Top coat	60 µm
Thickness Top coat	Acrylate dispersion water-thinned
Colour Top coat	40 µm
	RAL5002 Ultramarine Blue

Packaging

Suitable for transport	Truck transport
Suitable for storage	Indoor storage
Packaging category	KSB's choice (A0)

Product properties

Specification of wetted parts	Manufactured without paint wetting impairment substances
-------------------------------	--



Etanorm 100-080-315 GG

ETN 100-080-315-GGSAA11 GSFEH4AHB

Standard Test of specification of wetted parts

Certificate Check of specification of wetted parts

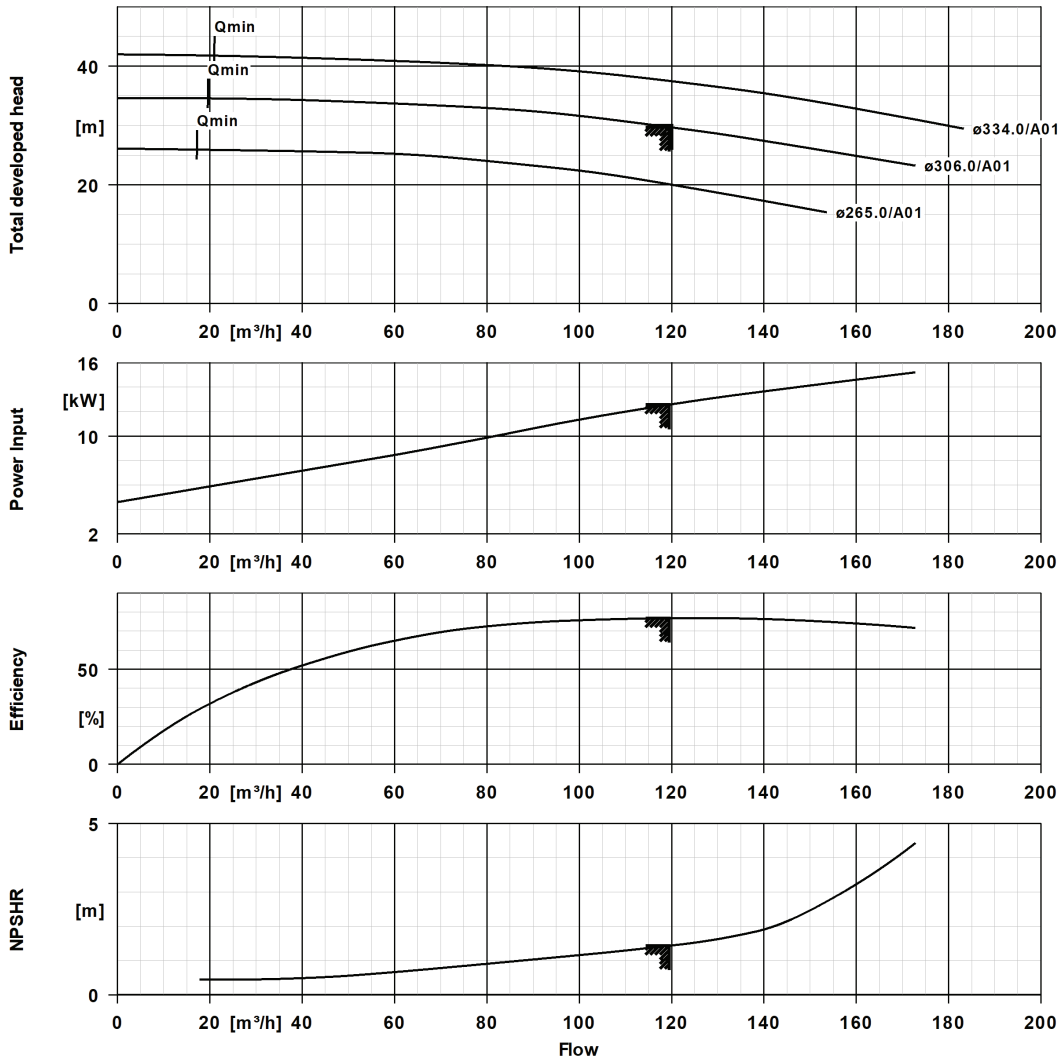
KSB documentation

Without

Performance Curve (Pump)



Etanorm 100-080-315 GG ETN 100-080-315-GGSAA11 GSFEH4AHB

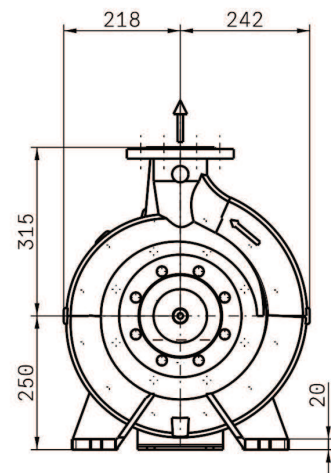
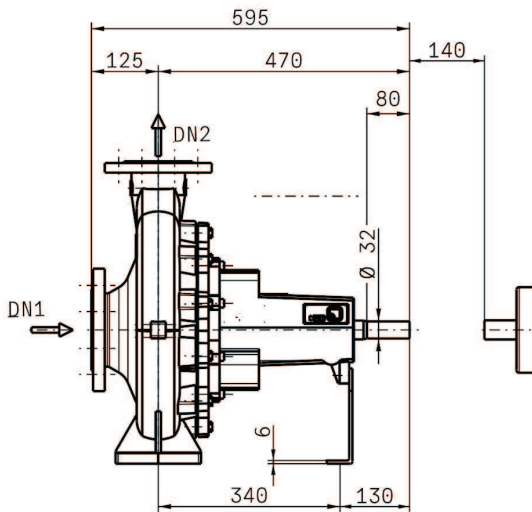
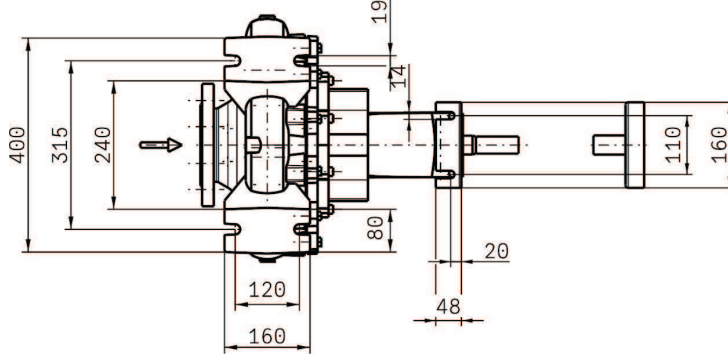


Curve Data

Pump speed	1,471 1/min	Efficiency Pump	76.8 %
Density Fluid handled	998 kg/m^3	Minimum efficiency index MEI	0.7
Kinematic viscosity Fluid handled	1 mm^2/s	Maximum power input at duty point	12.6 kW
Flow rate	119 m^3/h	NPSH required	1.43 m
Head	29.7 m	Hydraulic impeller diameter	306 mm
		Hydraulic calculation according to standard/class	EN ISO 9906 Class 3B

According to EN ISO 9906, §4.4.2 (pump input power below 10 kW)

Etanorm 100-080-315 GG
 ETN 100-080-315-GGSAA11 GSFEH4AHB



Drawing is not to scale.

Dimensions are given in mm

Motor

Rated power Motor 15 kW
 Rated speed Motor 1,465 1/min

Connections

Nominal diameter Suction nozzle DN 100
 Suction flange bolt hole pattern as per standard EN1092-2
 Nominal diameter Discharge nozzle DN 80
 Discharge flange bolt hole pattern as per standard EN1092-2
 Nominal pressure Suction nozzle PN 16
 Nominal pressure Discharge nozzle PN 16

Net weight

Total weight Pump 105.8 kg
 Total weight Control unit 0 kg



Etanorm 100-080-315 GG

ETN 100-080-315-GGSAA11 GSFEH4AHB

Connect pipelines stress-free

Dimensional tolerances for shaft axis height: DIN 747

Dimensions without tolerances, middle tolerances to: ISO 2768-m

Connection dimensions for pumps: EN735

Dimensions without tolerances - welded parts: ISO 13920-B

Dimensions without tolerances - gray cast iron parts: ISO 8062-CT9

Plan for additional connections see extra drawing