

**ETPB050-050-160 CC I10D200552 B**  
Standardised KSB pump

**Operating data**

Requested flow rate	22.00 m <sup>3</sup> /h	Actual flow rate	22.74 m <sup>3</sup> /h
Requested developed head	25.60 m	Actual developed head	27.36 m
Pumped medium	Water	Efficiency	45.3 %
	Clean water	Power absorbed	3.73 kW
Pumped medium details	Not containing chemical and mechanical substances which affect the materials	Pump speed of rotation	2956 rpm
		NPSH required	2.32 m
Max. ambient air temperature	20.0 °C	Permissible operating pressure	10.00 bar.g
Min. ambient air temperature	20.0 °C	Discharge press.	2.68 bar.g
Fluid temperature	20.0 °C		
Fluid density	998 kg/m <sup>3</sup>	Shutoff head	36.65 m
Fluid viscosity	1.00 mm <sup>2</sup> /s	Min. allow. flow for continuous stable operation	5.12 m <sup>3</sup> /h
Suction pressure max.	0.00 bar.g	Min. allow. mass flow for continuous stable operation	1.42 kg/s
Mass flow rate	6.31 kg/s	Max. allow. mass flow	11.45 kg/s
Max. power on curve	4.14 kW	Design	Single system 1 x 100 %

**Design**

Pump standard	Self priming pump	Material code	Q1Q1X4GG
Design	Close-coupled	Shaft seal code	10
Orientation	Horizontal	Sealing plan	I Single-acting mechanical seal(internal circulation)
Suction nominal dia.	DN 50	Seal chamber design	Standard seal chamber
Suction nominal pressure	PN 16	Contact guard	With
Suction position	axial	Impeller diameter	163.0 mm
Suction flange drilled according to standard	EN1092-1	Direction of rotation from drive	Clockwise
Discharge nominal dia.	DN 50	Silicon free pump assembly	Yes
Discharge nominal pressure	PN 16	Bearing bracket construction	Close-coupled
Discharge position	top (0°/360°)	Bearing bracket size	WE25
Discharge flange drilled according to standard	EN1092-1	Bearing type	Anti-friction bearings
Shaft seal	Single acting mechanical seal	Lubrication type	Grease
		Color	Ultramarine blue (RAL 5002) KSB-blue
Shaft seal manufacturer	KSB		
Shaft seal type	1		

**ETPB050-050-160 CC I10D200552 B**

Standardised KSB pump

**Driver, accessories**

Driver type	Electric motor	Motor enclosure	IP55
Drive standard mech.	IEC	Cos phi at 4/4 load	0.82
Model (make)	KSB-Motor	Motor efficiency at 4/4 load	89.2 %
Drive supplied by	Standard motor supplied by KSB - mounted by KSB	Temperature sensor	3 PTC resistors
Motor const. type	V15	Terminal box position	0°/360° (top)
Motor size	132S		Viewed from the drive
Efficiency class	Efficiency class IE3 acc. to IEC60034-30-1	Motor winding	400 / 690 V
Motor speed	2958 rpm	Number of poles	2
Frequency	50 Hz	Connection mode	Delta
Rated voltage	400 V	Motor cooling method	Surface cooling
Rated power P2	5.50 kW	Motor material	Aluminium
Available reserve	47.27 %	Frequency inverter operation	FI allowed
Rated current	10.5 A	allowed	
Starting current ratio	8.7	Motor noise pressure level	71 dBa
Insulation class	F to IEC 34-1	Motor data can vary from type plate information. Motor data describes KSB's choice functional specification and is used for pump selection.	
		EAC Approval	Yes

**Materials C**

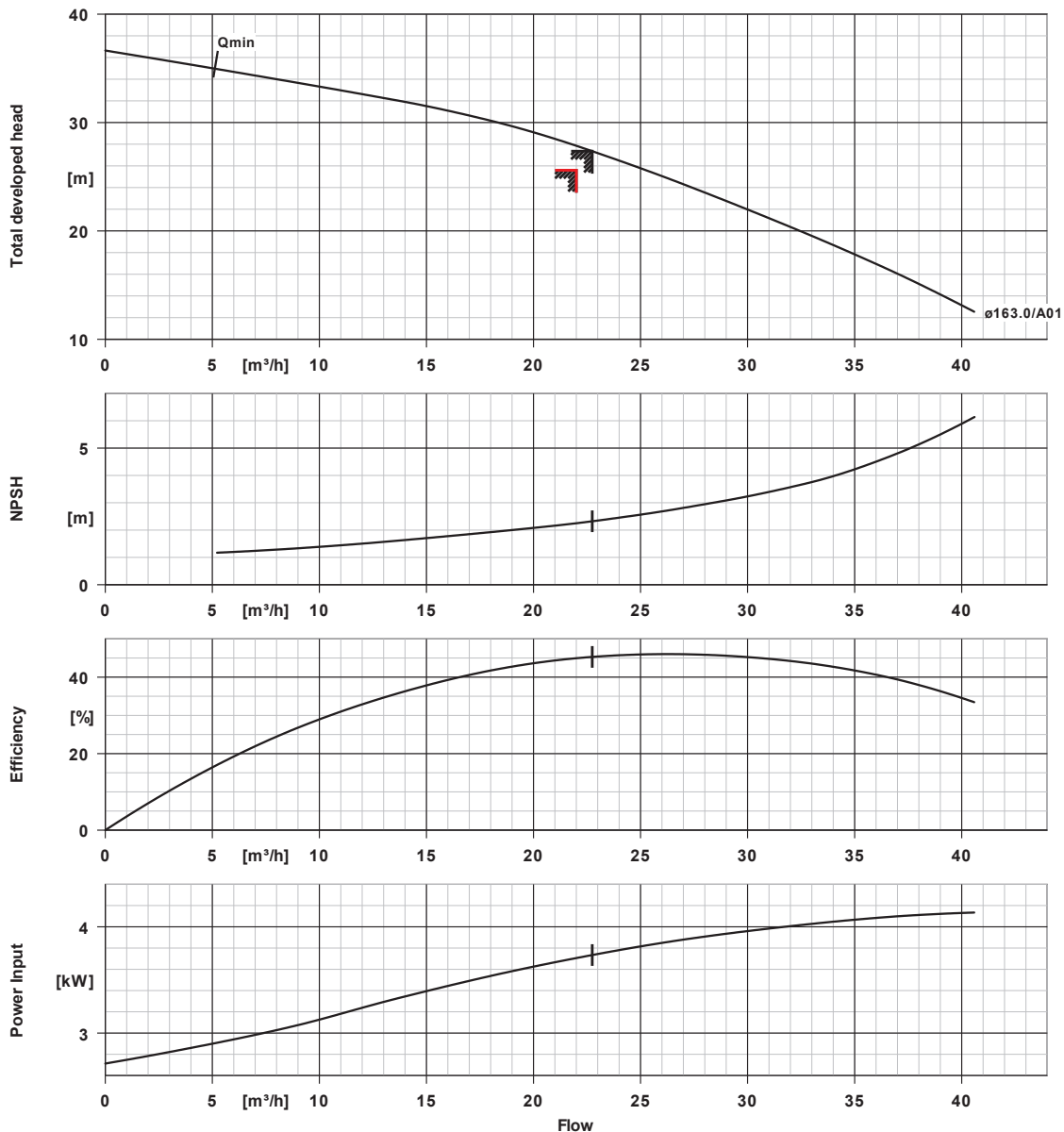
Volute casing (102)	Stainless steel 1.4408 / A743 GR CF8M	Motor stool (341)	Grey cast iron EN-GJL-250/A48CL35B
Casing cover (161)	Stainless steel 1.4408 / A743 GR CF8M	O-Ring (412)	EPDM 80
Shaft (210)	Stainless steel 1.4571	Shaft sleeve (523)	Stainless steel 1.4571
Impeller (230)	Stainless steel 1.4408		

**Packaging**

Packaging category	A0 Packing acc. to KSB choice	Packaging for transport	Truck
Packaging for storage	Indoor		

**Nameplates**

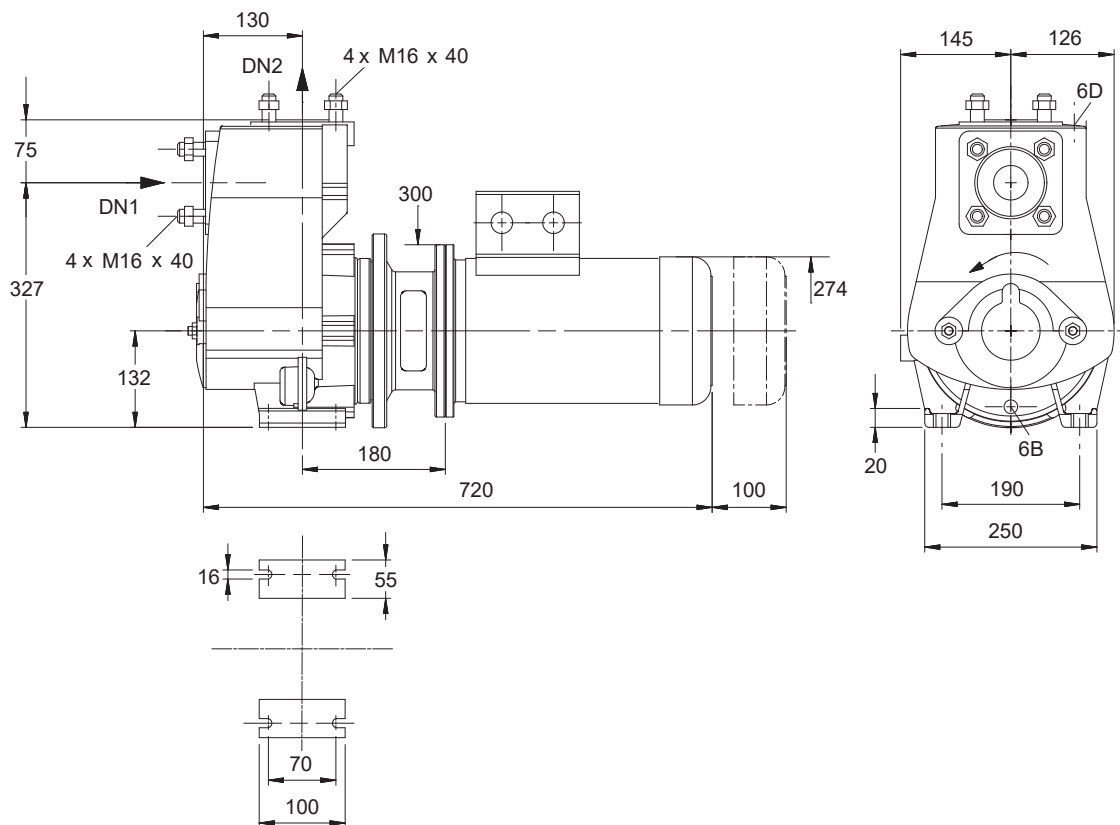
Nameplates language	International
---------------------	---------------



Curve data

Speed of rotation	2956 rpm	Requested developed head	25.60 m
Fluid density	998 $kg/m^3$	Efficiency	45.3 %
Viscosity	1.00 $mm^2/s$	Power absorbed	3.73 kW
Flow rate	22.74 $m^3/h$	NPSHR	2.32 m
Requested flow rate	22.00 $m^3/h$	Curve number	K2745.V124738
Total developed head	27.36 m	Effective impeller diameter	163.0 mm

Standardised KSB pump



Drawing is not to scale

Dimensions in mm

**Motor**

Motor manufacturer	KSB-Motor
Motor size	132S
Motor power	5.50 kW
Number of poles	2
Speed of rotation	2958 rpm
Position of terminal box	0°/360° (top) Viewed from the drive

**Connections**

Suction nominal size DN1	DN 50 / EN1092-1
Discharge nominal size DN2	DN 50 / EN1092-1
Nominal pressure suct.	PN 16
Rated pressure disch.	PN 16

**Weight net**

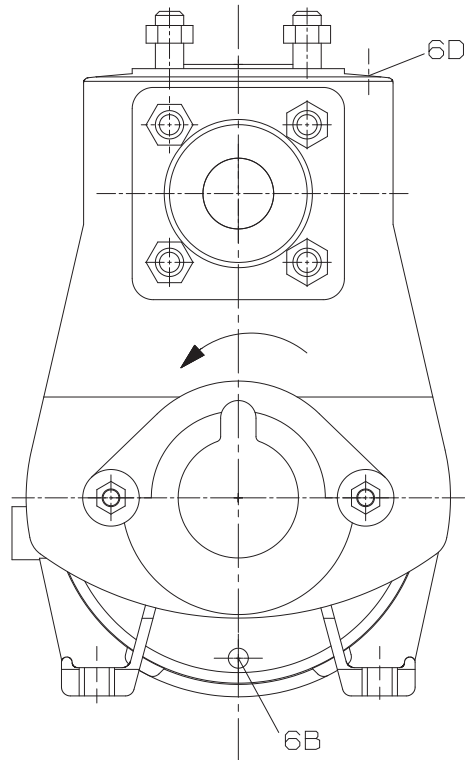
Pump	60 kg
Motor	60 kg
Total	120 kg

Connect pipes without stress or strain!

For auxiliary connections see separate drawing.

ETPB050-050-160 CC I10D200552 B  
Standardised KSB pump

Page: 5 / 5



**Connections**

6B Pumped liquid drain

G 3/8

Drilled and plugged.

6D Pumped medium - filling / venting

G 3/8

Drilled and plugged.