

**ETPL040-040-110 GG I10A100112 B**

Standardised KSB pump

**Operating data**

Requested flow rate	17.82 m³/h	Actual flow rate	17.74 m³/h
Requested developed head	8.00 m	Actual developed head	7.93 m
Pumped medium	Water	Efficiency	49.6 %
	Clean water	Power absorbed	0.77 kW
Pumped medium details	Not containing chemical and mechanical substances which affect the materials	Pump speed of rotation	2889 rpm
		NPSH required	2.70 m
Max. ambient air temperature	20.0 °C	Permissible operating pressure	10.00 bar.g
Min. ambient air temperature	20.0 °C	Discharge press.	0.78 bar.g
Fluid temperature	20.0 °C		
Fluid density	998 kg/m³	Shutoff head	11.87 m
Fluid viscosity	1.00 mm²/s	Min. allow. flow for continuous stable operation	2.67 m³/h
Suction pressure max.	0.00 bar.g	Min. allow. mass flow for continuous stable operation	0.74 kg/s
Mass flow rate	4.92 kg/s	Max. allow. mass flow	7.17 kg/s
Max. power on curve	0.79 kW	Design	Single system 1 x 100 %

**Design**

Pump standard	Self priming pump	Material code	Q7Q7X4GG-Y10
Design	Baseplate mounted, long-coupled	Shaft seal code	10
	Horizontal	Sealing plan	I Single-acting mechanical seal(internal circulation)
Orientation		Seal chamber design	Standard seal chamber
Suction nominal dia.	Rp 1 1/2	Contact guard	With
Suction nominal pressure	PN 10	Impeller diameter	108.0 mm
Suction position	axial	Direction of rotation from drive	Clockwise
Suction flange drilled according to standard	ISO7-1	Silicon free pump assembly	Yes
Discharge nominal dia.	Rp 1 1/2	Bearing bracket construction	Standard (normal)
Discharge nominal pressure	PN 10	Bearing bracket size	WE17
Discharge position	top (0°/360°)	Bearing seal	V ring
Discharge flange drilled according to standard	ISO7-1	Bearing type	Anti-friction bearings
Shaft seal	Single acting mechanical seal	Lubrication type	Grease
		Color	Ultramarine blue (RAL 5002)
Shaft seal manufacturer	Burgmann		KSB-blue
Shaft seal type	EMG12-G6		

**Driver, accessories**

Driver type	Electric motor	Rated power P2	1.10 kW
Drive standard mech.	IEC	Available reserve	42.62 %
Drive supplied by	without motor	Number of poles	2
Motor const. type	B3	Motor data can vary from type plate information. Motor data describes KSB's choice functional specification and is used for pump selection.	
Motor size	080M	EAC Approval	Yes
Frequency	50 Hz		

**ETPL040-040-110 GG I10A100112 B**

Standardised KSB pump

**Materials G****Notes 1**

General criteria for a water analysis: pH-value  $\geq 6,5$ ; chloride content (Cl)  $\leq 250$  mg/kg. Chlorine (Cl<sub>2</sub>)  $\leq 0.6$  mg/kg.

Volute casing (102)

Grey cast iron EN-GJL-250/A48CL35B

Casing cover (161)

Grey cast iron EN-GJL-250/A48CL35B

Shaft (210)

Impeller (230)

Bearing housing (350)

O-Ring (412)

Stainless steel 1.4571

Grey cast iron EN-GJL-250

Grey cast iron EN-GJL-250

EPDM 80

**Packaging**

Packaging category

A0 Packing acc. to KSB choice

Packaging for transport

Truck

Packaging for storage

Indoor

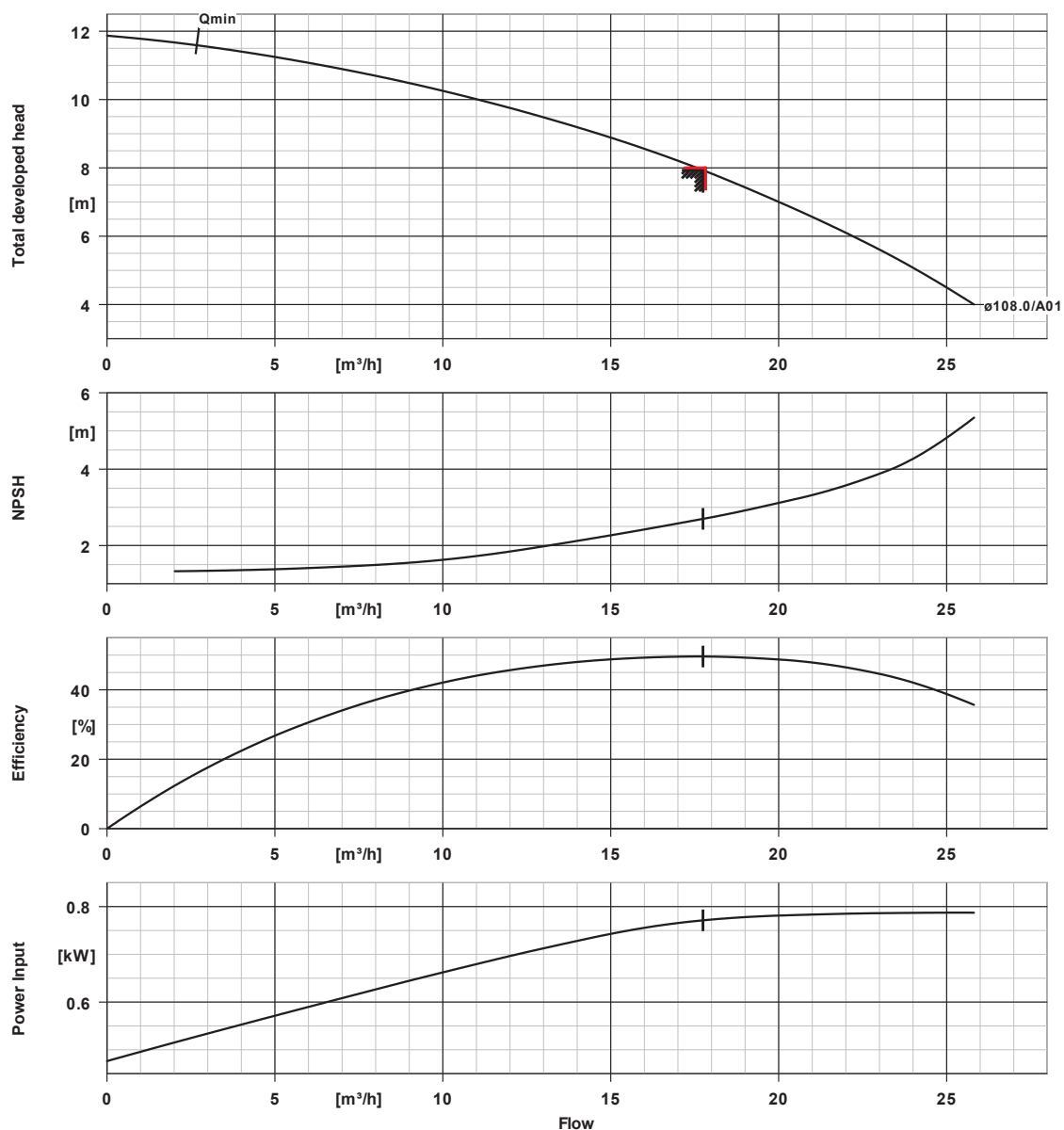
**Nameplates**

Nameplates language

International

**ETPL040-040-110 GG I10A100112 B**

Standardised KSB pump

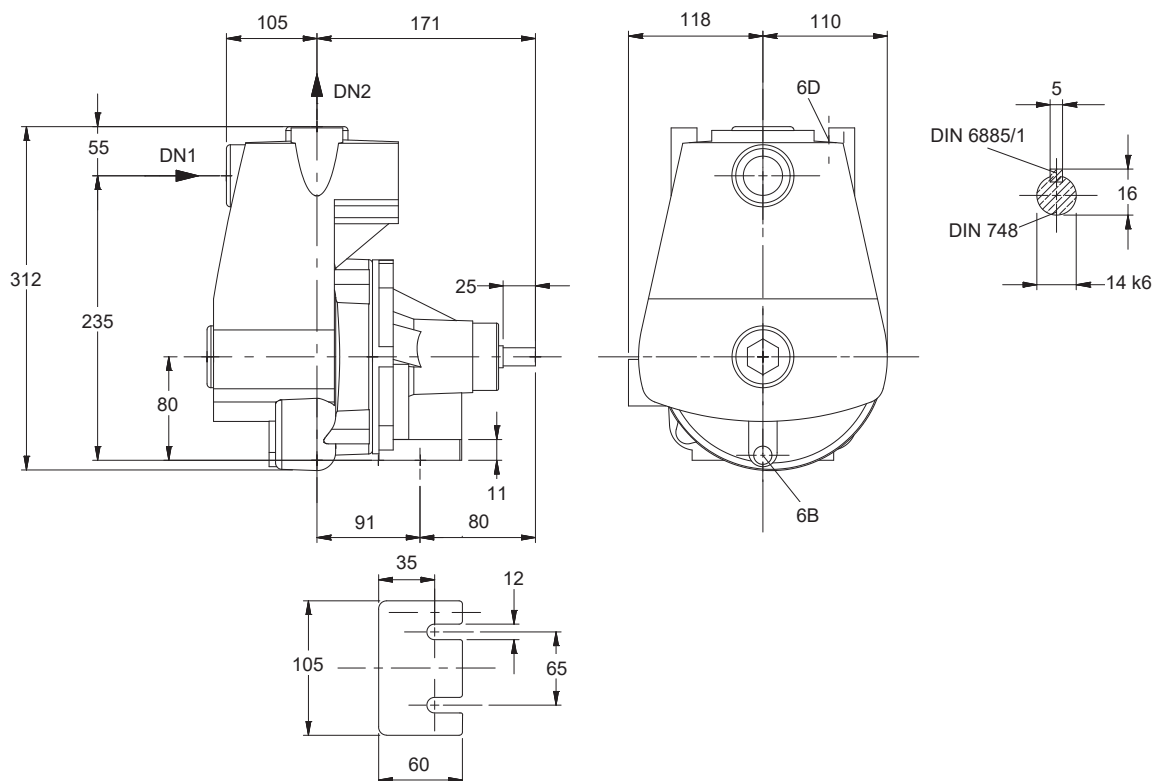


**Curve data**

Speed of rotation	2889 rpm	Requested developed head	8.00 m
Fluid density	998 kg/m <sup>3</sup>	Efficiency	49.6 %
Viscosity	1.00 mm <sup>2</sup> /s	Power absorbed	0.77 kW
Flow rate	17.74 m <sup>3</sup> /h	NPSHR	2.70 m
Requested flow rate	17.82 m <sup>3</sup> /h	Curve number	K2745.V124727
Total developed head	7.93 m	Effective impeller diameter	108.0 mm

## ETPL040-040-110 GG I10A100112 B

Standardised KSB pump



*Drawing is not to scale*

*Dimensions in mm*

### Motor

required but not scope of supply  
 Motor size 080M  
 Motor power 1.10 kW  
 Number of poles 2  
 Speed of rotation 2896 rpm

### Connections

Suction nominal size DN1	Rp 1 1/2 / ISO7-1
Discharge nominal size DN2	Rp 1 1/2 / ISO7-1
Nominal pressure suct.	PN 10
Rated pressure disch.	PN 10

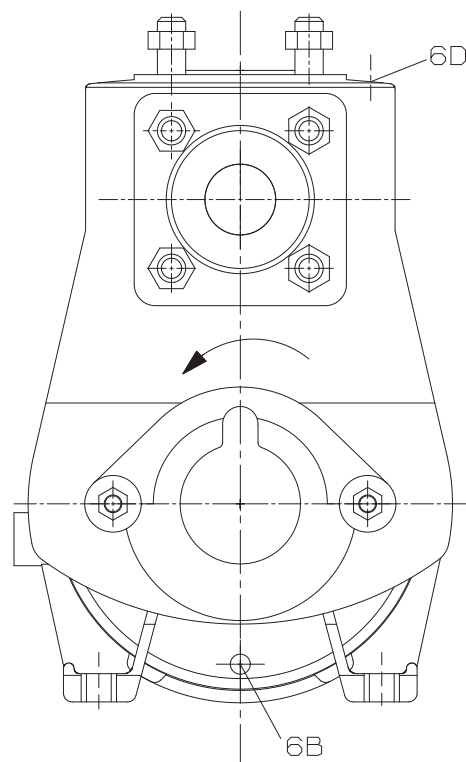
### Weight net

Pump	20 kg
Total	20 kg

**Connect pipes without stress or strain!**

**For auxiliary connections see separate drawing.**

**ETPL040-040-110 GG I10A100112 B**  
Standardised KSB pump



## Connections

6B Pumped liquid drain  
6D Pumped medium - filling / venting

G 1/8  
G 3/8

Drilled and plugged.  
Drilled and plugged.