

**ETPB065-065-180 GG ID300752 B**

Standardised KSB pump

**Operating data**

Requested flow rate	12.00 m <sup>3</sup> /h	Actual flow rate	12.62 m <sup>3</sup> /h
Requested developed head	40.00 m	Actual developed head	44.23 m
Pumped medium	Water	Efficiency	32.4 %
	Clean water	Power absorbed	4.68 kW
Pumped medium details	Not containing chemical and mechanical substances which affect the materials	Pump speed of rotation	2963 rpm
		NPSH required	2.21 m
Max. ambient air temperature	20.0 °C	Permissible operating pressure	10.00 bar.g
Min. ambient air temperature	20.0 °C	Discharge press.	4.33 bar.g
Fluid temperature	20.0 °C		
Fluid density	998 kg/m <sup>3</sup>	Shutoff head	46.01 m
Fluid viscosity	1.00 mm <sup>2</sup> /s	Min. allow. flow for continuous stable operation	6.47 m <sup>3</sup> /h
Suction pressure max.	0.00 bar.g	Min. allow. mass flow for continuous stable operation	1.79 kg/s
Mass flow rate	3.50 kg/s	Max. allow. mass flow	15.50 kg/s
Max. power on curve	6.44 kW	Design	Single system 1 x 100 %

**Design**

Pump standard	Self priming pump	Material code	U3U3VGG-Y10
Design	Close-coupled	Shaft seal code	9
Orientation	Horizontal	Sealing plan	I Single-acting mechanical seal(internal circulation)
Suction nominal dia.	DN 65	A liquid free of solids is assumed	
Suction nominal pressure	PN 16	Seal chamber design	Standard seal chamber
Suction position	axial	Contact guard	With
Suction flange drilled according to standard	EN1092-2	Impeller diameter	180.0 mm
Discharge nominal dia.	DN 65	Direction of rotation from drive	Clockwise
Discharge nominal pressure	PN 16	Silicon free pump assembly	Yes
Discharge position	top (0°/360°)	Bearing bracket construction	Close-coupled
Discharge flange drilled according to standard	EN1092-2	Bearing bracket size	WE35
Flanges DN 65 will be drilled with 4 holes		Bearing type	Anti-friction bearings
Shaft seal	Single acting mechanical seal	Lubrication type	Grease
		Color	Ultramarine blue (RAL 5002) KSB-blue
Shaft seal manufacturer	Burgmann		
Shaft seal type	EMG13-G6		

**ETPB065-065-180 GG ID300752 B**

Standardised KSB pump

**Driver, accessories**

Driver type	Electric motor	Motor enclosure	IP55
Drive standard mech.	IEC	Cos phi at 4/4 load	0.83
Model (make)	KSB-Motor	Motor efficiency at 4/4 load	90.1 %
Drive supplied by	Standard motor supplied by KSB - mounted by KSB	Temperature sensor	3 PTC resistors
Motor const. type	V15	Terminal box position	0°/360° (top) Viewed from the drive
Motor size	132S	Motor winding	400 / 690 V
Efficiency class	Efficiency class IE3 acc. to IEC60034-30-1	Number of poles	2
Motor speed	2963 rpm	Connection mode	Delta
Frequency	50 Hz	Motor cooling method	Surface cooling
Rated voltage	400 V	Motor material	Aluminium
Rated power P2	7.50 kW	Frequency inverter operation	FI allowed
Available reserve	60.10 %	allowed	
Rated current	14.6 A	Motor noise pressure level	71 dBa
Starting current ratio	8.9	Motor data can vary from type plate information. Motor data describes KSB's choice functional specification and is used for pump selection.	
Insulation class	F to IEC 34-1	EAC Approval	Yes

**Materials G**

**Notes 1**

General criteria for a water analysis: pH-value  $\geq 6,5$ ; chloride content (Cl)  $\leq 250$  mg/kg. Chlorine (Cl2)  $\leq 0.6$  mg/kg.

Volute casing (102)	Grey cast iron EN-GJL-250/A48CL35B	Impeller (230)	Grey cast iron EN-GJL-250
Casing cover (161)	Grey cast iron EN-GJL-250/A48CL35B	Motor stool (341)	Grey cast iron EN-GJL-250/A48CL35B
Shaft (210)	Tempered steel C45+N	O-Ring (412)	EPDM 80
		Shaft sleeve (523)	Stainless steel 1.4571

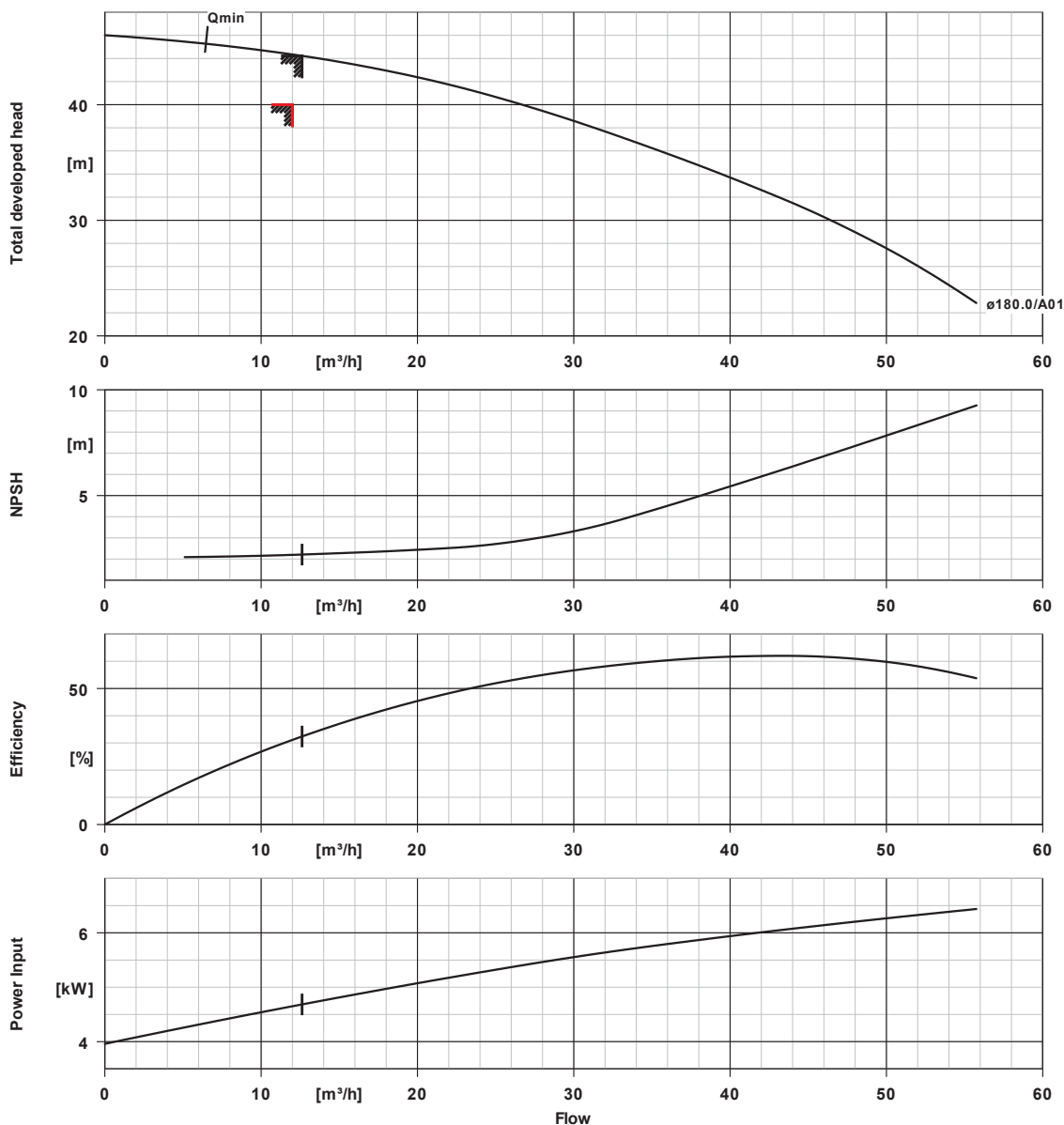
**Packaging**

Packaging category	A0 Packing acc. to KSB choice	Packaging for transport	Truck
Packaging for storage	Indoor		

**Nameplates**

Nameplates language	International
---------------------	---------------

**ETPB065-065-180 GG ID300752 B**  
Standardised KSB pump

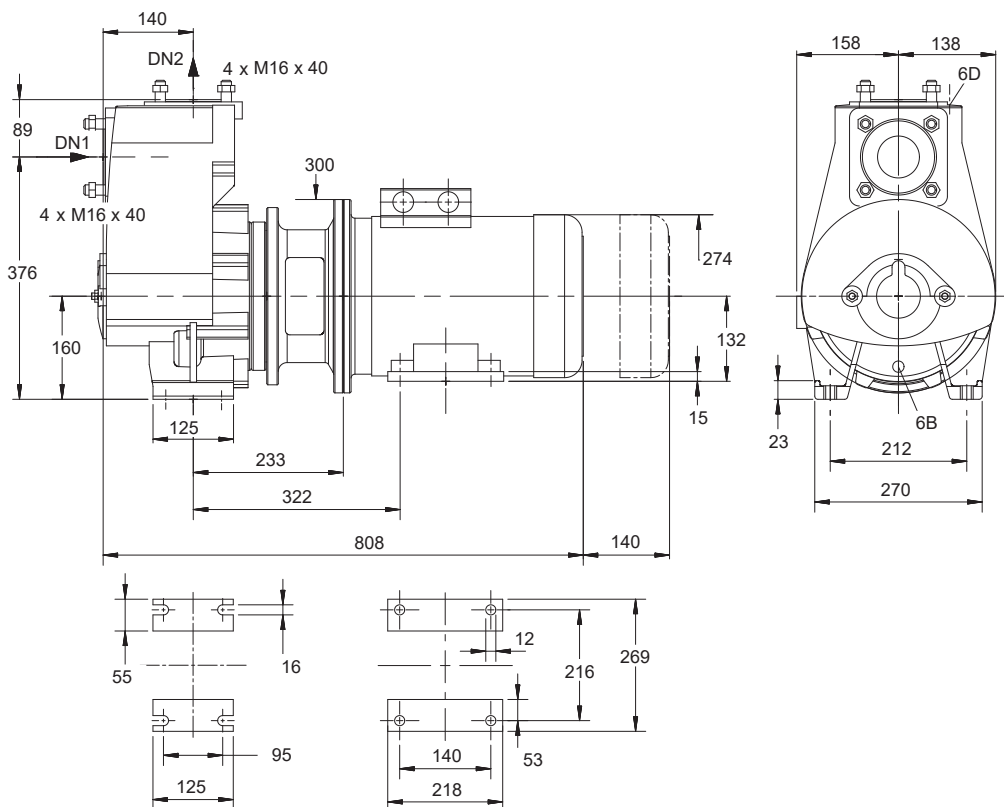


**Curve data**

Speed of rotation	2963 rpm	Requested developed head	40.00 m
Fluid density	998 $kg/m^3$	Efficiency	32.4 %
Viscosity	1.00 $mm^2/s$	Power absorbed	4.68 kW
Flow rate	12.62 $m^3/h$	NPSHR	2.21 m
Requested flow rate	12.00 $m^3/h$	Curve number	K2745.V124744
Total developed head	44.23 m	Effective impeller diameter	180.0 mm

ETPB065-065-180 GG ID300752 B

Standardised KSB pump



Drawing is not to scale

Dimensions in mm

**Motor**

Motor manufacturer	KSB-Motor
Motor size	132S
Motor power	7.50 kW
Number of poles	2
Speed of rotation	2963 rpm
Position of terminal box	0°/360° (top) Viewed from the drive

**Connections**

Suction nominal size DN1	DN 65 / EN1092-2
Discharge nominal size DN2	DN 65 / EN1092-2
Nominal pressure suct.	PN 16
Rated pressure disch.	PN 16
Flanges DN 65 will be drilled with 4 holes	

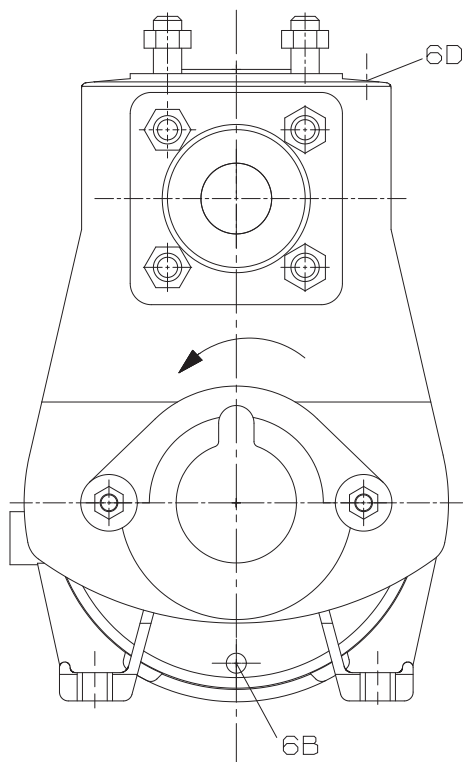
**Weight net**

Pump	61 kg
Motor	63 kg
Total	124 kg

Connect pipes without stress or strain!

For auxiliary connections see separate drawing.

**ETPB065-065-180 GG ID300752 B**  
Standardised KSB pump



**Connections**

6B Pumped liquid drain

G 3/8

Drilled and plugged.

6D Pumped medium - filling / venting

G 3/8

Drilled and plugged.