

**Etanorm S 080-315 S10**  
 Standardpump acc. EN 733
**Operating data**

Requested flow rate	100.0 m <sup>3</sup> /h	Actual flow rate	20.0 - 145.0 m <sup>3</sup> /h
Requested developed head	24.0 m	Actual developed head	20.0 - 28.1 m
Pumped medium	Water, contaminated water Slightly contaminated water Not containing chemical and mechanical substances which affect the materials	Efficiency	
		Power absorbed	
		Pump speed of rotation	1950 rpm
		NPSH required	
Fluid temperature	20.0 °C	Permissible operating pressure	16.00 bar.g
Fluid density	998 kg/m <sup>3</sup>	Discharge press.	
Fluid viscosity	1.00 mm <sup>2</sup> /s		
Suction pressure max.	0.00 bar.g	Shutoff head	28.2 m
Mass flow rate	19.96 kg/s	Design	Single system 1 x 100 %
Max. power on curve	11.5 kW	Performance test	No
Min. allow. flow rate for stable operation	20.0 m <sup>3</sup> /h	Acceptance standard	
Min. allow. mass flow rate for stable operation	5.97 kg/s		

**Design**

Pump standard	EN 733	Shaft seal code	10
Design	Baseplate mounted, long- coupled	Sealing plan	I Single-acting mechanical seal(internal circulation)
Orientation	Horizontal	Seal chamber design	Standard seal chamber with
Suction nominal dia.	DN 100	Contact guard	
Suction nominal pressure	PN 16	Wear ring	Casing wear ring
Suction position	axial	Impeller diameter	278.0 mm
Suction Flange standard	EN 1092-2	Free passage size	18.0 mm
Discharge nominal dia.	DN 80	Direction of rotation from drive	Clockwise
Discharge nominal pressure	PN 16	Silicon free pump assembly	Yes
Pump discharge position	top (0°/360°)	Bearing bracket construction	Standard (normal)
Connection standard discharge	EN 1092-2	Bearing bracket size	WE35
Shaft seal	Single acting mechanical seal	Bearing seal	V ring
Manufacturer	KSB	Bearing type	Anti-friction bearings
Type	1	Lubrication type	Grease
Material code	Q1Q1X4GG	Colour	Ultramarine blue (RAL 5002) KSB-blue

**Driver, accessories**

Manufacturer	Flender	Driver type	
Coupling type	Eupex NH	Drive supplied by	without motor
Nominal size	95	Motor const. type	B3
Spacer length	140.0 mm	Motor size	
Coupling guard type	Lightweight, not treadproof (ZN79)	Frequency	
Guard size	A148	Rated power P2	
Guard material	Galvanised steel ST TZN	Number of poles	4

**Etanorm S 080-315 S10**  
Standardpump acc. EN 733

**Materials S**

Notes

general criteria for a water analysis: pH-value  $\geq 7$ ; chloride content (Cl)  $\leq 250$  mg/kg. chlorine (Cl<sub>2</sub>)  $\leq 0.6$  mg/kg.

Volute casing (102)

Discharge cover (163)

Shaft (210)

Impeller (230)

Joint ring (411)

Ductile cast iron JS1025

Ductile cast iron JS1025

Steel/Tempered steel

E335/C45

Grey cast iron JL 1040

DPAF Sealing plate asbestos-free

Casing wear ring (502.1)

Casing wear ring (502.2)

Shaft sleeve (523)

Stud (902)

Screwed plug (903)

Impeller nut (922)

Grey cast iron GG/CAST IRON


Grey cast iron GG/CAST IRON

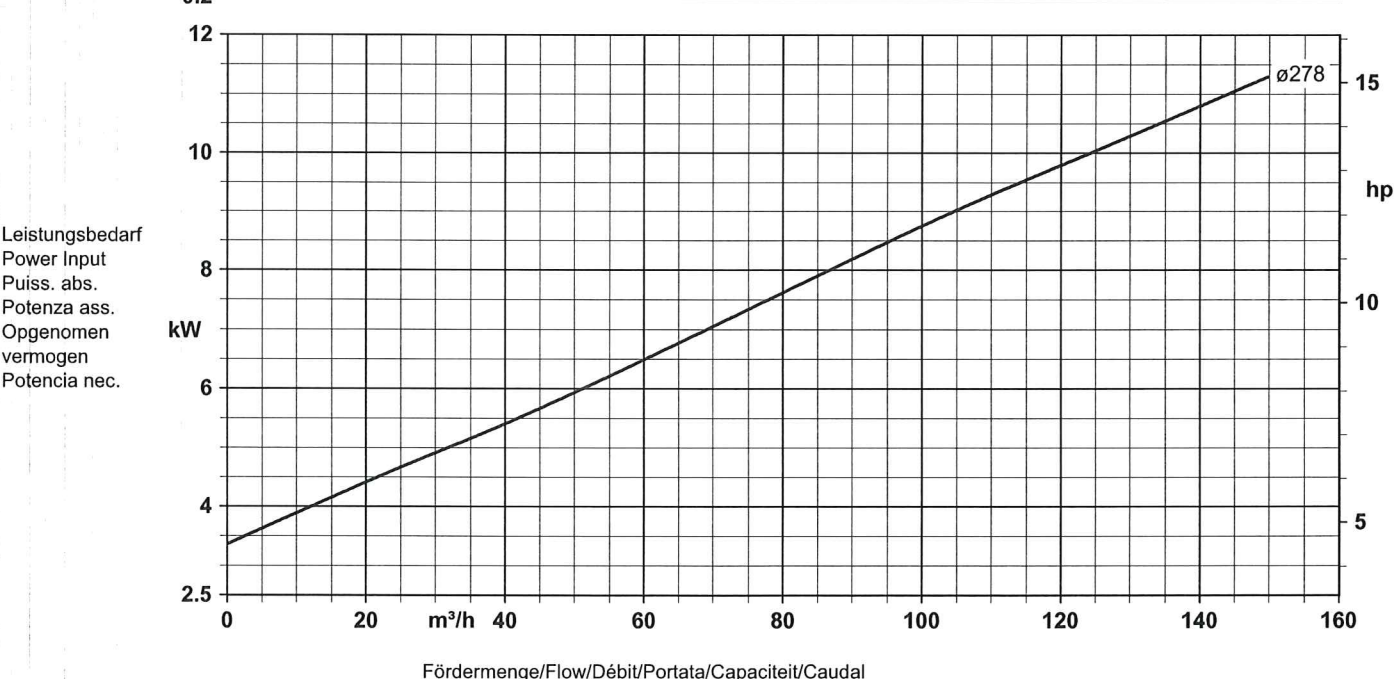
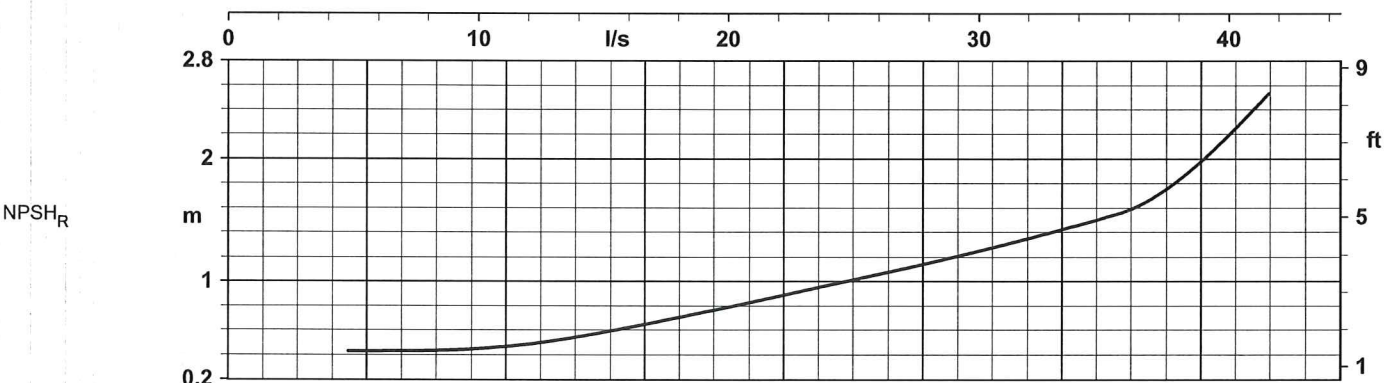
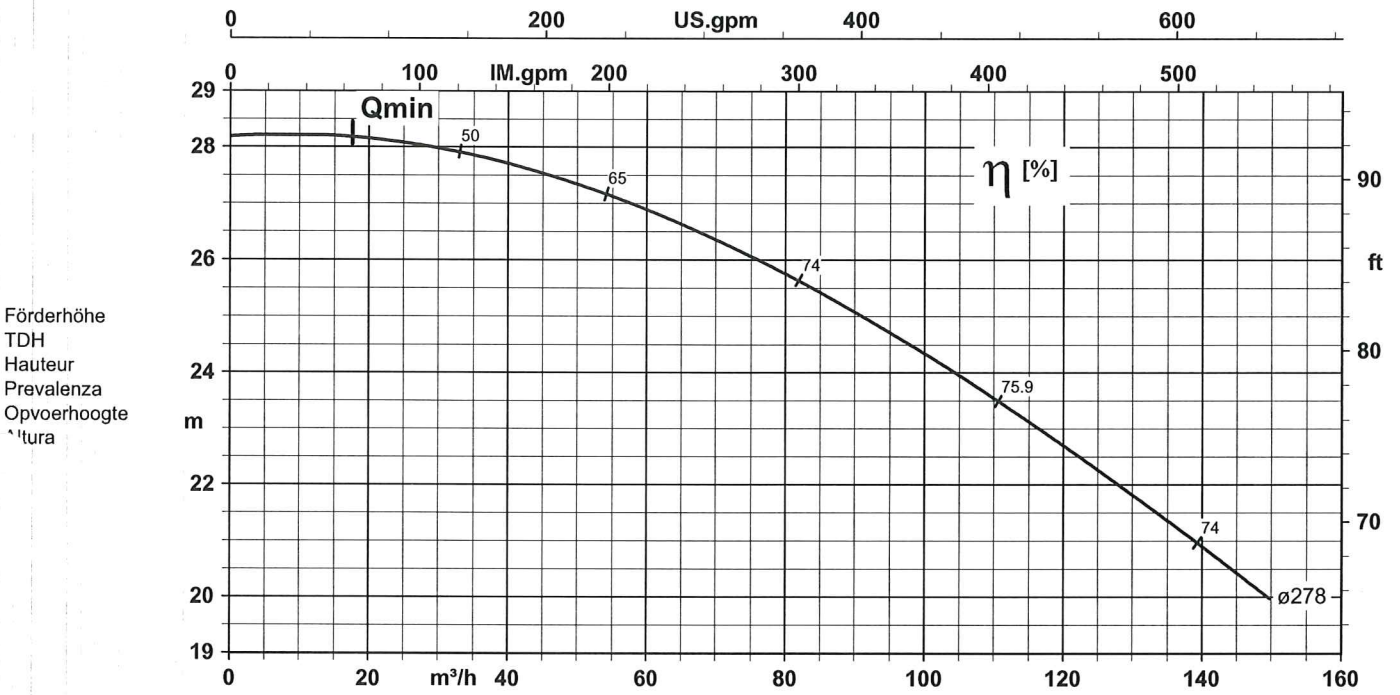
Stainless steel 1.4571

Steel 8.8

Steel ST

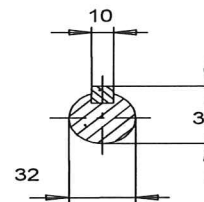
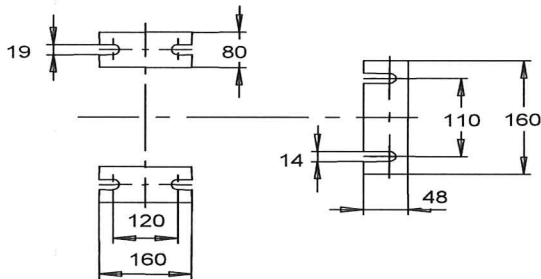
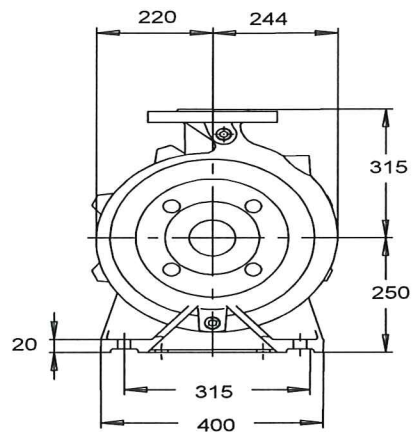
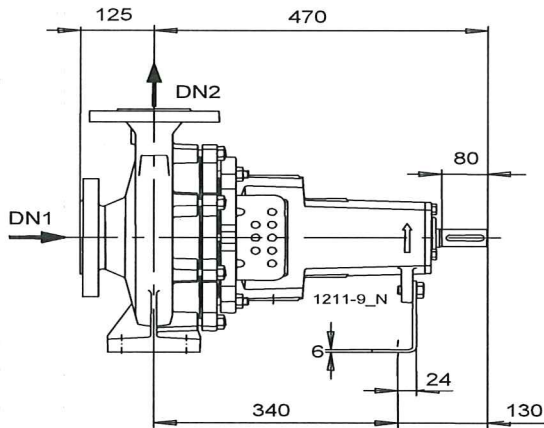
Steel 8

Baureihe-Größe Type-Size Modèle	Tipo Serie Tipo	Nennzahl Nom. speed Vitesse nom.	Velocità di rotazione nom. Nominaal toerental Revoluciones nom.	Lauf- $\phi$ Impeller dia. Diamètre de roue	$\phi$ girante Waaier $\phi$ $\phi$ rodete	
Etanorm 80-315 Etabloc		1450 1/min		278 mm		
Projekt Project Projet	Progetto Projekt Proyecto	Angebots-Nr. Quotation No. N° de l'offre	N° offerta Offertenr. N° oferta	Pos.-Nr. Item No. N° de pos.	N° pos Pos. nr. N° de art	



Fördermenge/Flow/Débit/Portata/Capaciteit/Caudal

**Etanorm S 080-315 S10**  
Standardpump acc. EN 733



Shaft end  
Key in acc. with DIN 6885, sh.1

*Drawing is not to scale*

*Dimensions in mm*

**Motor**

Not in scope of supply	
Motor size	160M
Motor power	12.60 kW
Number of poles	4
Speed of rotation	1770 rpm

**Connections**

Suction nominal size DN1	DN 100 / EN 1092-2
Discharge nominal size DN2	DN 80 / EN 1092-2
Nominal pressure suct.	PN 16
Rated pressure disch.	PN 16

**Coupling**

Coupling manufacturer	Flender
Coupling type	Eupex NH
Coupling size	95
Spacer	140.0 mm

**Weight net**

Pump	104 kg
Coupling	4 kg
Coupling guard	2 kg
Total	110 kg

**Connect pipes without stress or strain!**

Dimensional tolerances for shaft axis height:  
Dimensions without tolerances, middle tolerances to:  
Connection dimensions for pumps:

DIN 747  
ISO 2768-m  
EN735

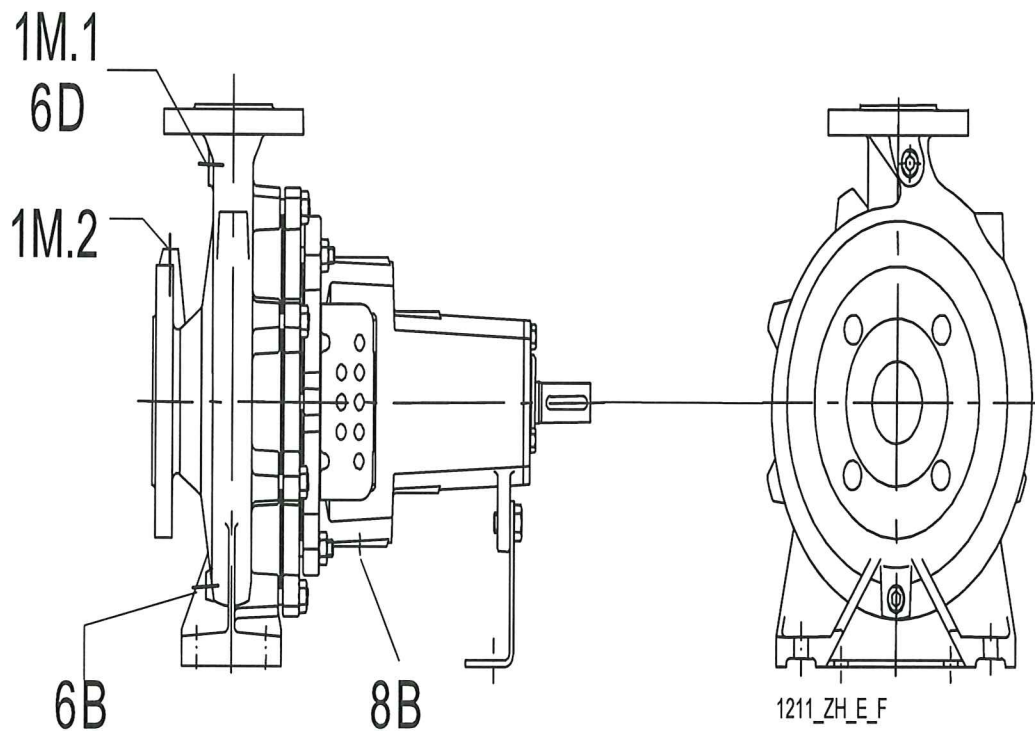
**For auxiliary connections see separate drawing.**

**Etanorm S 080-315 S10**  
Standardpump acc. EN 733

Dimensions without tolerances - welded parts:  
Dimensions without tolerances - gray cast iron parts:

ISO 13920-B  
ISO 8062-CT9

**Etanorm S 080-315 S10**  
Standardpump acc. EN 733



**Connections**

1M.1 Pressure gauge connection	G 3/8	Drilled and plugged.
1M.2 Pressure gauge connection	G 3/8	Not executed
6B Pumped liquid drain	G 3/8	Drilled and plugged.
6D Pumped medium - filling / venting	G 3/8	Drilled and plugged.
8B Leakage drain	G 1/2	Drilled and plugged.